

# ELGIN PRIMARY SCHOOL REZONING

GRAHAM JARVIS

(Head of Lifelong Learning,  
Culture & Sport)

PAUL WATSON

(Senior Education Adviser)

# The Proposals

It is proposed to make the following changes to primary school catchment areas (zones) in Elgin.

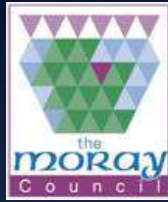
- (i) To vary the catchment areas of Bishopmill, East End, Greenwards, New Elgin, Seafield and West End primary schools in Elgin based on geographical areas which are delineated on plans.
- (ii) To establish a catchment area for a new primary school, including nursery, to serve a delineated geographical area in south east Elgin.
- (iii) To establish a catchment area for a new primary school, including nursery, to serve a delineated geographical area in north Elgin.

# Proposed Implementation Dates

- (i) January 2016 (revised catchment areas for existing Elgin primary schools).
- (ii) No earlier than August 2018 for a new school to serve south east Elgin.
- (iii) No earlier than August 2020 for a new school to serve north Elgin.

# Roll Projection Methodology

- Roll projections are revised every year.
- P2-7 based on existing roll moving forward.
- P1 based on birth rates within zone + factor in for new housing developments + factor in/out for placing request trends.
- Easier to forecast 4 years in advance than 7 as P1 children do not actually exist in 7 year forecast.
- Roll projections have to assume no change in external factors which will impact on roll (e.g. local employment issues, rates of house-building etc).



# Projected Rolls

School	Fnl Cap	2014	2015	2016	2017	2018	2019	2020	2021
Bishopmill	390	359	376	398	407	423	431	450	471
East End	233	203	223	263	302	340	353	382	409
Greenwards	390	331	323	322	315	328	315	329	341
Mosstowie	75	49	55	53	55	54	54	58	50
New Elgin	531	511	552	594	625	665	689	721	750
Seafield	353	278	278	306	336	364	395	439	467
St Sylvester's	232	205	208	202	201	206	203	202	204
West End	249	234	239	231	226	234	230	222	223

# Placing Request Numbers

## September 2014

School	Roll	Out of zone	% out of zone
Bishopmill	359	183	50.9%
East End	203	52	25.6%
Greenwards	331	236	71.3%
Mosstowie	49	21	42.9%
New Elgin	511	126	24.7%
Seafield	278	69	24.8%
St Sylvesters	205	73	35.6%
West End	234	120	51.3%

# Placing Requests Reasons

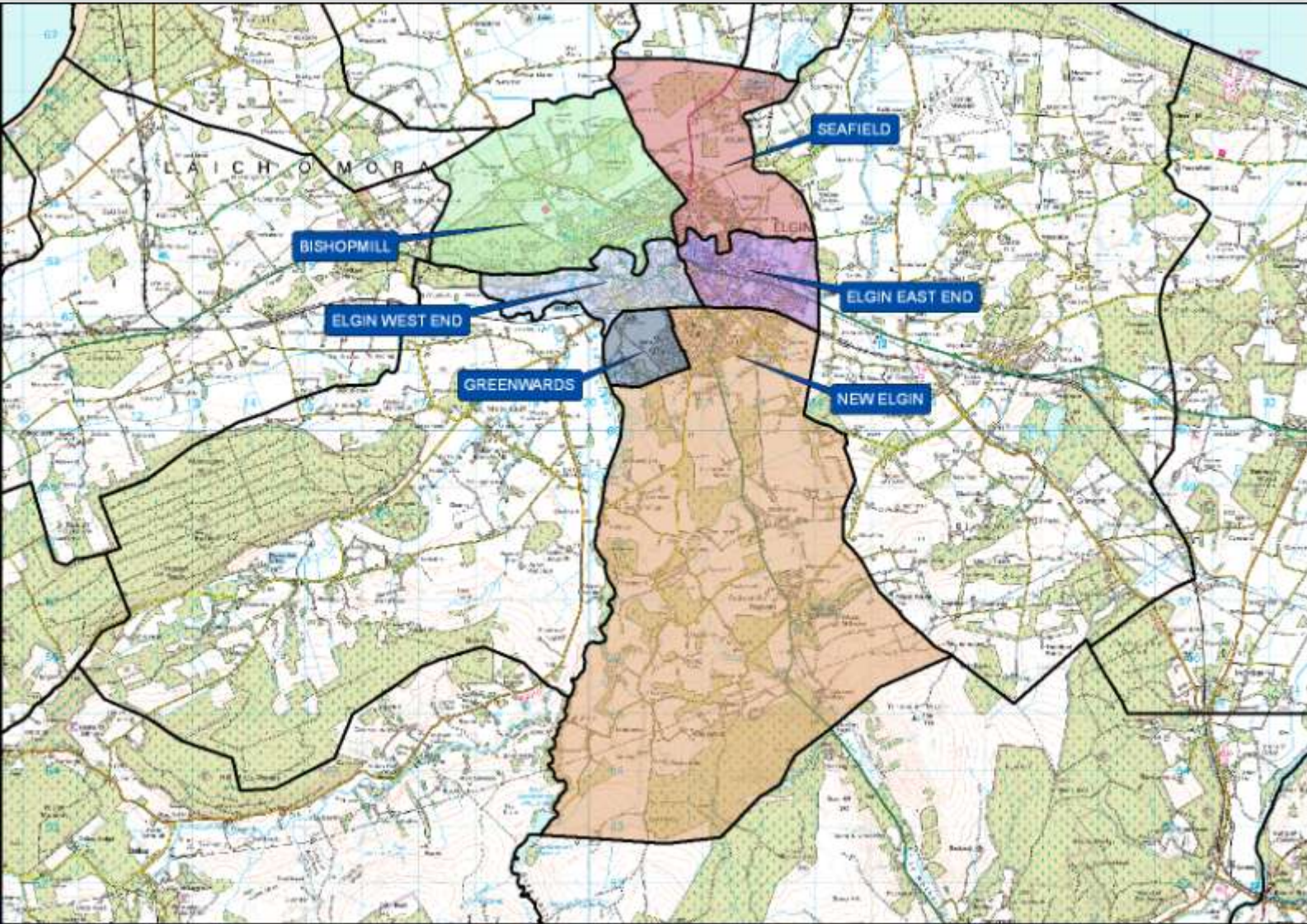
Analysis of the approximately 50% of placing request applicants who stated a reason, over the last six years, has identified the following as the main reasons behind the requests:

- Change of address (moving house and wishing to remain at current school).
- Siblings already attending the school.
- Child attended playgroup or nursery at that school.
- Childminder lives close by the school.

# Rationale for Proposals

- Comprehensive study of placing request trends in Elgin.
- Study of proposed future housing Developments.
- Discussions with head teachers and a range of authority officers.
- Roll projections for proposed catchment areas.
- Proposals based around post code areas.





# Bishopmill

Roll forecast – 120% capacity by 2021.

New housing – 1500 Findrassie.

## Proposal –

- Create a new zone in north Elgin from existing Bishopmill & Seafield zones.

## East End

Roll forecast – 175% capacity by 2021.

Placing requests from East End to New Elgin.

### Proposal –

- Create a new zone in south east Elgin for Pinefield, Linkwood and new developments.
- Remove Pinefield from East End zone.
- Incorporate Kingsmills into East End zone.

# Greenwards

Roll forecast – 87% capacity by 2021.

High number of placing requests to Greenwards from area west of A941.

## Proposal –

- Rezone all area to west of A941 To Greenwards except Main Road & New Elgin Road.

# Mosstowie

Roll forecast – 67% capacity by 2021.

No immediate changes to the Mosstowie zone.

# New Elgin

Roll forecast – 140% capacity by 2021.

Increased housing, high number of placing requests to New Elgin, childcare, routes to school.

## Proposal –

- Rezone all area to west of A941 to Greenwards except Main Road & New Elgin Road. Create a new zone in south east Elgin for Pinefield, Linkwood and new developments.

# Seafield

Roll forecast – 120% capacity by 2021.

New housing – 1500 Findrassie.

## Proposal –

- Create a new zone in north Elgin from existing Bishopmill & Seafield zones.

# St Sylvester's

Roll forecast – 88% capacity by 2021.

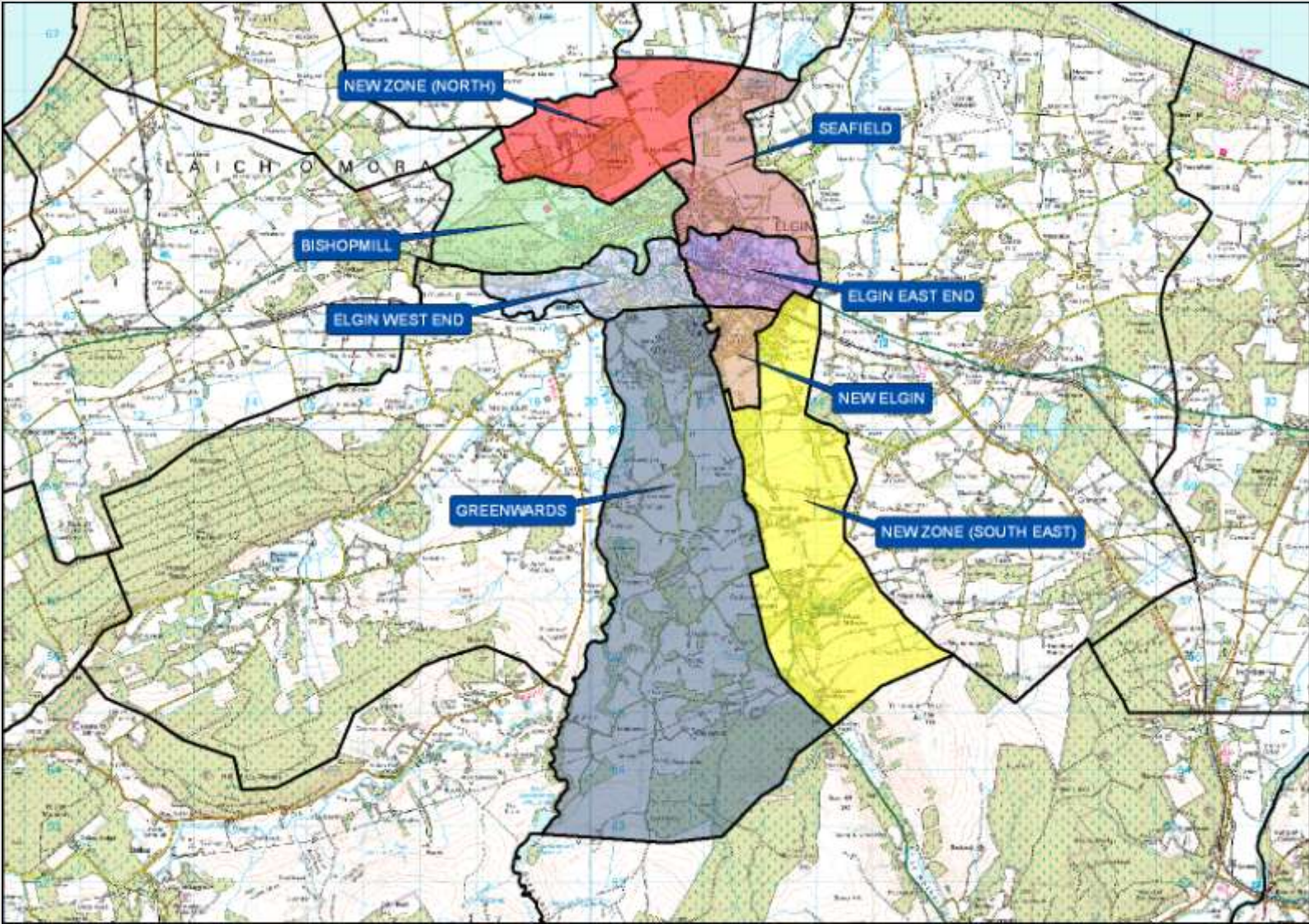
No change.

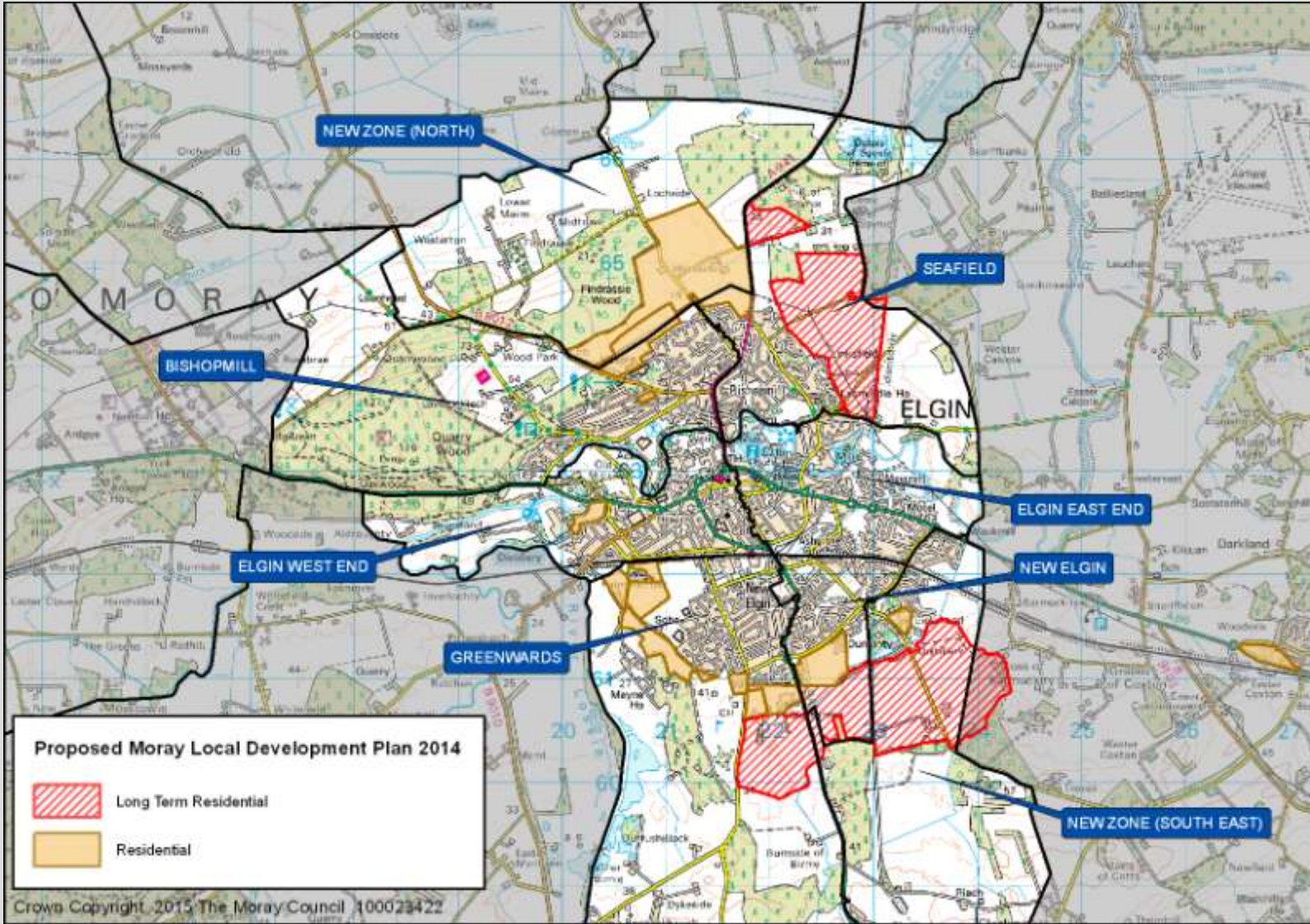


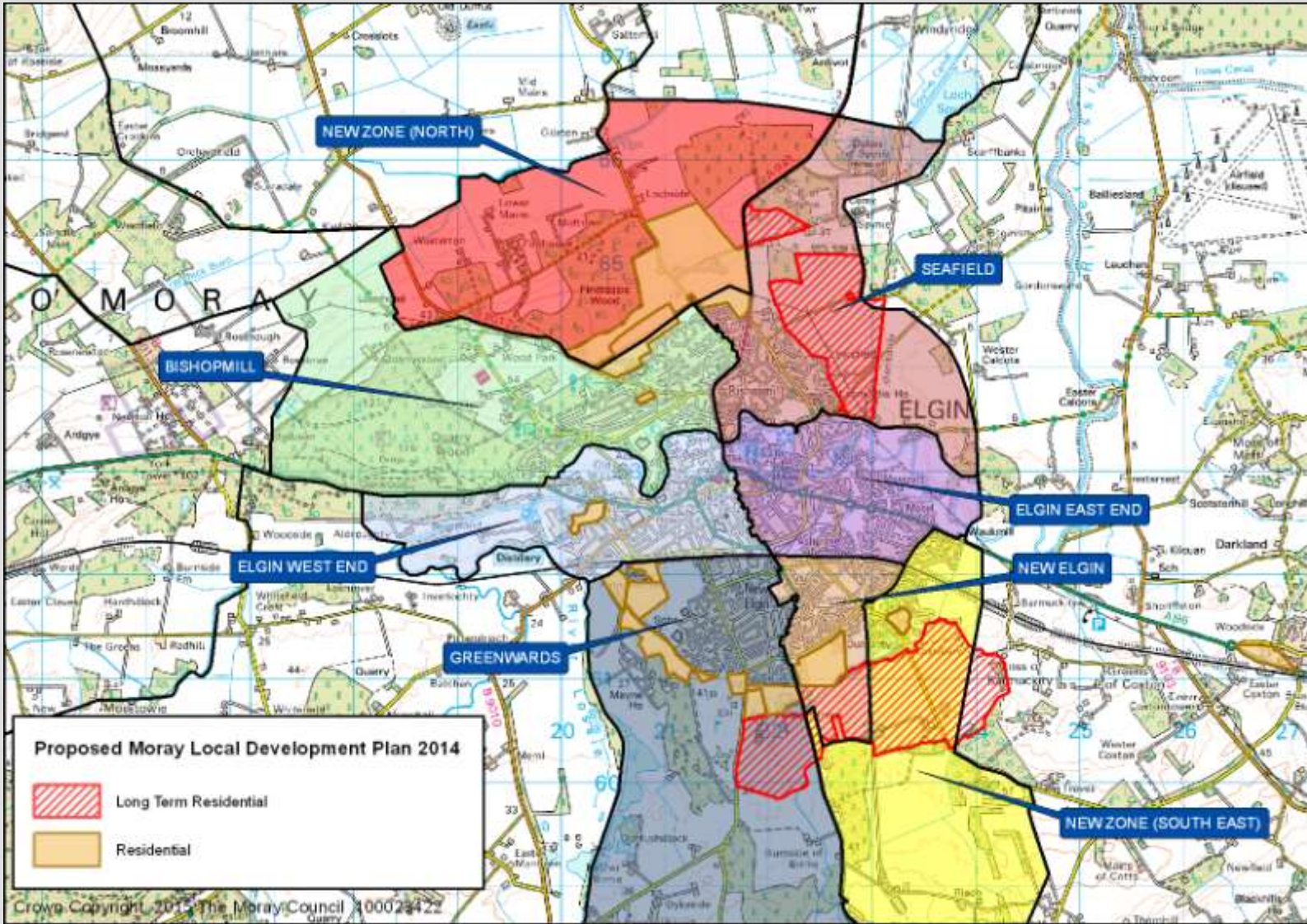
## West End

Roll forecast – 78% capacity by 2021.

No change at this time other than redefining zone to include post code IV30 1YF. Longer term consider a new school for west end of Elgin to include Mosstowie zone.







# Roll Projections



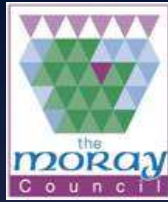
School	Fnl Cap	Current	2015	2016	2017	2018	2019	2020	2021
Bishopmill	390	359	374	393	405	418	390	390	390
New Zone (North)							103	191	278
East End	233	203	169	214	257	300	264	264	264
Greenwards	390	331	348	348	338	350	338	360	360
Mosstowie	75	49	55	53	55	54	54	50	50
New Elgin	531	511	297	320	339	370	396	460	460
New Zone (Sth-East)			303	328	333	348	338	334	334
Seafield	353	278	267	290	318	335	353	353	353
St Sylvester's	232	205	208	202	201	206	203	202	204
West End	249	234	231	222	222	232	232	222	223

# Educational Benefits

- Pupils able to attend zoned school and be taught with peers from their community.
- Alleviate projected pupil roll pressures across Elgin
- All Elgin primary schools will have clear and distinct associations with their local communities.
- Flexible learning spaces will improve the range of learning environments
- Removing the anxieties which children and parents have experienced in over the availability of places in their zoned school.
- Placing requests for pupils will be more likely to gain admission.

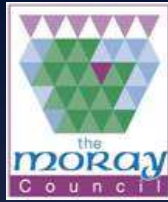
# Other Likely Effects of Proposals

- Proposals have no detriment to future users (e.g. current nursery pupils), other users of provision or other pupils in Moray.
- Any new schools will have nursery provision.
- Any new school will be designed in such a way as to promote accessible, inclusive learning which will meet the needs of all learners including those with ASN.
- Additional staffing at any new school will provide increased opportunities for collegiate working.
- Potential knock on effects for secondary zones.



# Transition Arrangements

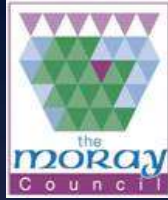
- No existing pupils will be required to move school unless that is by parental choice.
- New zones become applicable from August 2016 (except where new schools have yet to be established in which case it will be from future commencement date of new school).
- Pupils having commenced their education when new school zones become applicable can remain in their chosen primary school and will have the option to transfer to their new designated primary school once the new zones become effective.





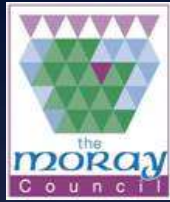
# Transport Arrangements

- Proposals designed to make travel to school as safe as possible.
- Currently free transport for primary school pupils who reside more than 2 miles from their zoned school.
- Parents who make successful placing requests have to make their own transport arrangements and meet the costs.
- Establishing new schools likely to ensure that traffic problems round existing schools do not increase.
- School travel plans will be revisited once school zones are confirmed. Travel plans will be revised when establishing new schools and be available prior to the effective dates of new zones.



# Involvement of Education Scotland

Education Scotland receive copies of proposal document, written representations, summary of public meetings & other relevant documentation and prepare report on educational aspects of proposal not later than 3 weeks after the Moray Council has submitted documents.



# Timelines

Public consultation on rezoning Elgin primary schools -  
13/4/15 to 29/5/15

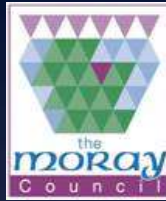
Preparation of documentation for Education Scotland -  
1/6/15 to 10/8/15

Education Scotland considers proposals –  
24/8/15 to 11/9/15

Preparation of consultation report on rezoning Elgin  
primary schools - 1/9/15 to 9/11/15

C&YPS Committee to take a decision on rezoning Elgin  
primary schools - 9/12/15

New zones applicable - 4/1/16



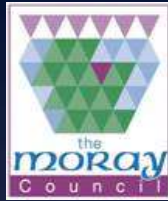
# How to Respond

Responses to the consultation should be made by writing to:

Elgin Primary School Rezoning Consultation  
The Moray Council  
Community Support Unit  
High Street  
Elgin  
IV30 1BX

- or by e-mail to: [futureschools@moray.gov.uk](mailto:futureschools@moray.gov.uk)
- or by completing the consultation response form
- or by completing the on-line consultation form  
(link at [www.moray.gov.uk/rezoning](http://www.moray.gov.uk/rezoning))

**All responses must be submitted by 5.00pm on 29<sup>th</sup> May 2015 for them to be taken into account as part of the consultation.**



# Questions?