

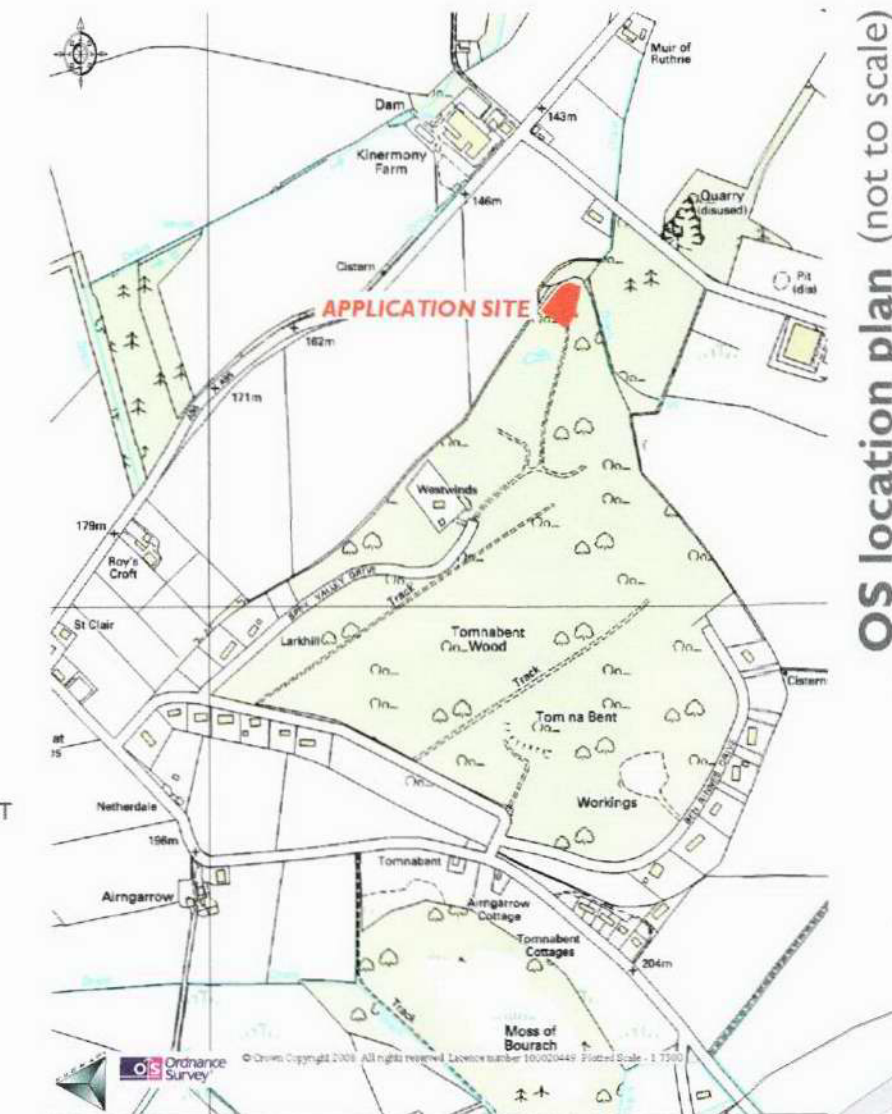
Proposed erection of dwellinghouse with separate double garage
 At Oak View, Spey Valley Drive, Tomanbent, Aberlour, Moray For Mrs D McConachie

PLANNING DRAWING - SITE INFORMATION

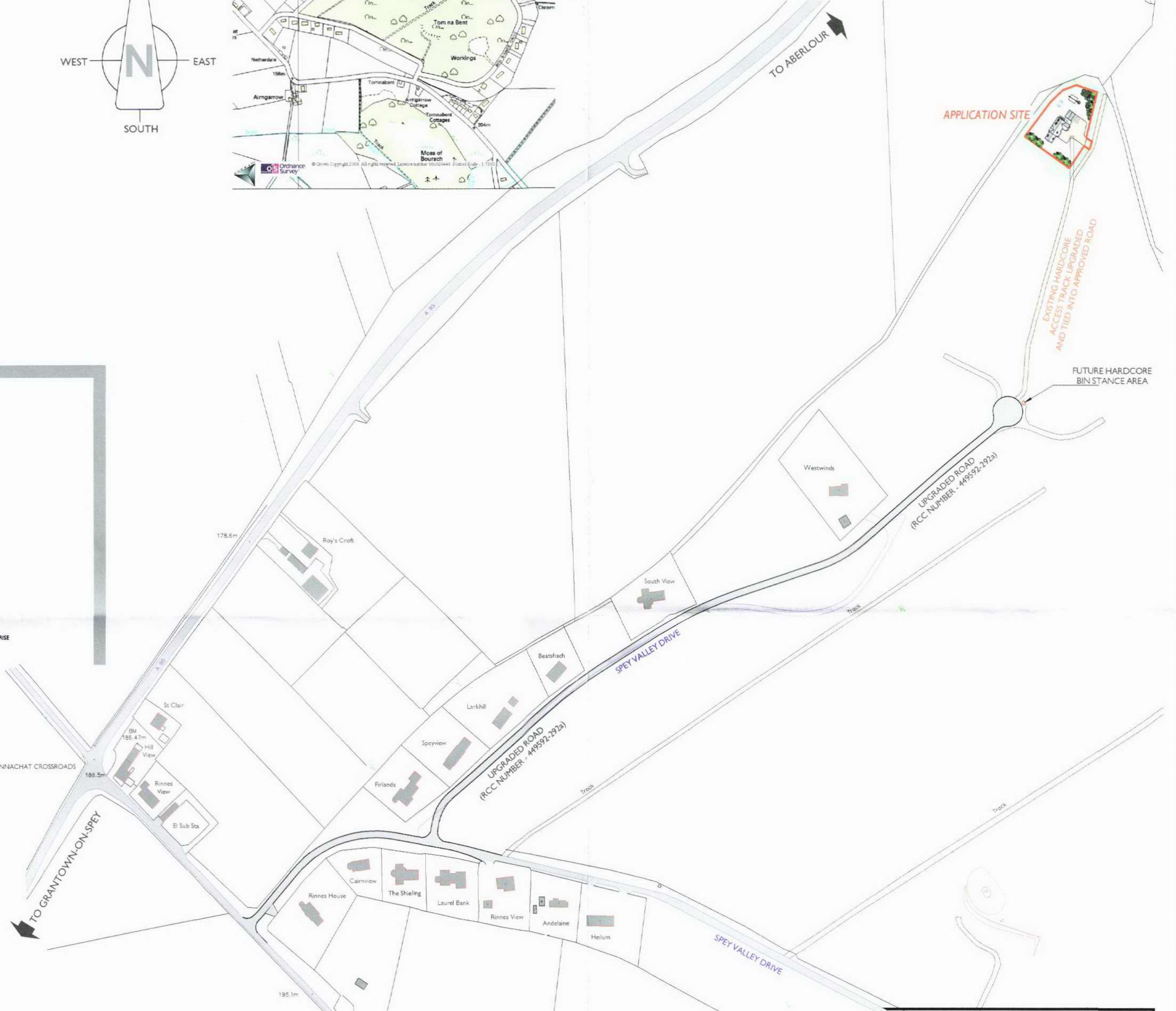
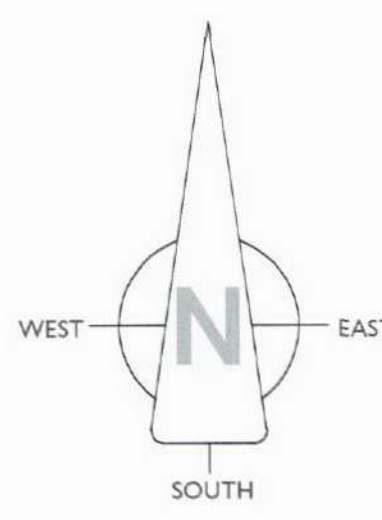


Typical 3d image of house design
 Produced using TurboCAD V10 professional, 3DS max design 2011 and Photography

DATE	REVISION	NO.
01 / 06 / 12	RCC ROAD DENOTED ON DRG. ACCESS TRACK ALTERED TO SUIT FUTURE BIN STANCE NOTE ADDED	A



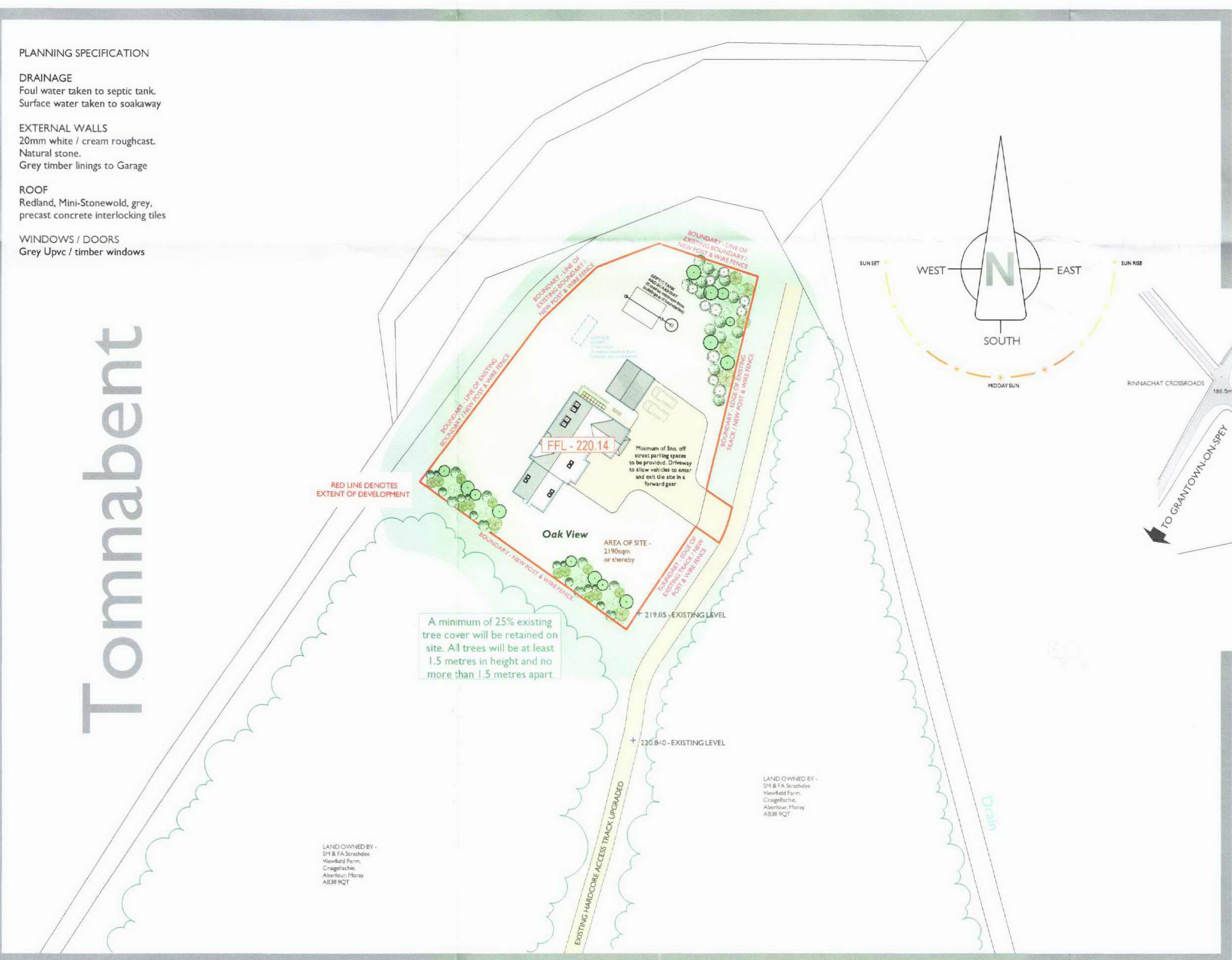
OS location plan (not to scale)



location plan (scale - 1:2500)



aerial photo (not to scale)



site plan (scale - 1:500)

- PLANNING SPECIFICATION**
- DRAINAGE**
Foul water taken to septic tank.
Surface water taken to soakaway
 - EXTERNAL WALLS**
20mm white / cream roughcast.
Natural stone.
Grey timber linings to Garage
 - ROOF**
Redland, Mini-Stonewold, grey,
precast concrete interlocking tiles
 - WINDOWS / DOORS**
Grey Upvc / timber windows

Tomnabent



Strathdee Properties Ltd.
 VIEWFIELD FARM, CRAIGELLACHIE,
 ABERLOUR, MORAY, AB38 9QT
 T - (01340) 881784 F - (01340) 881783

PROJECT
 Proposed erection of dwellinghouse with separate double garage At Oak View, Spey Valley Drive, Tomanbent, Aberlour, Moray For Mrs D McConachie

DRAWING DESCRIPTION
 PLANNING DRAWING - SITE INFORMATION

DRAWING no. OAKVIEW / PLANNING / 01	SCALE 1:500 AND AS STATED (A1)
DRAWN BY S Reid MC/AT Chartered Architectural Technologist	DATE April 2012