



**Hattonhill, West Elgin**



**Survey and Site Observations**

Scale 1:10,000

**Landscape Survey**

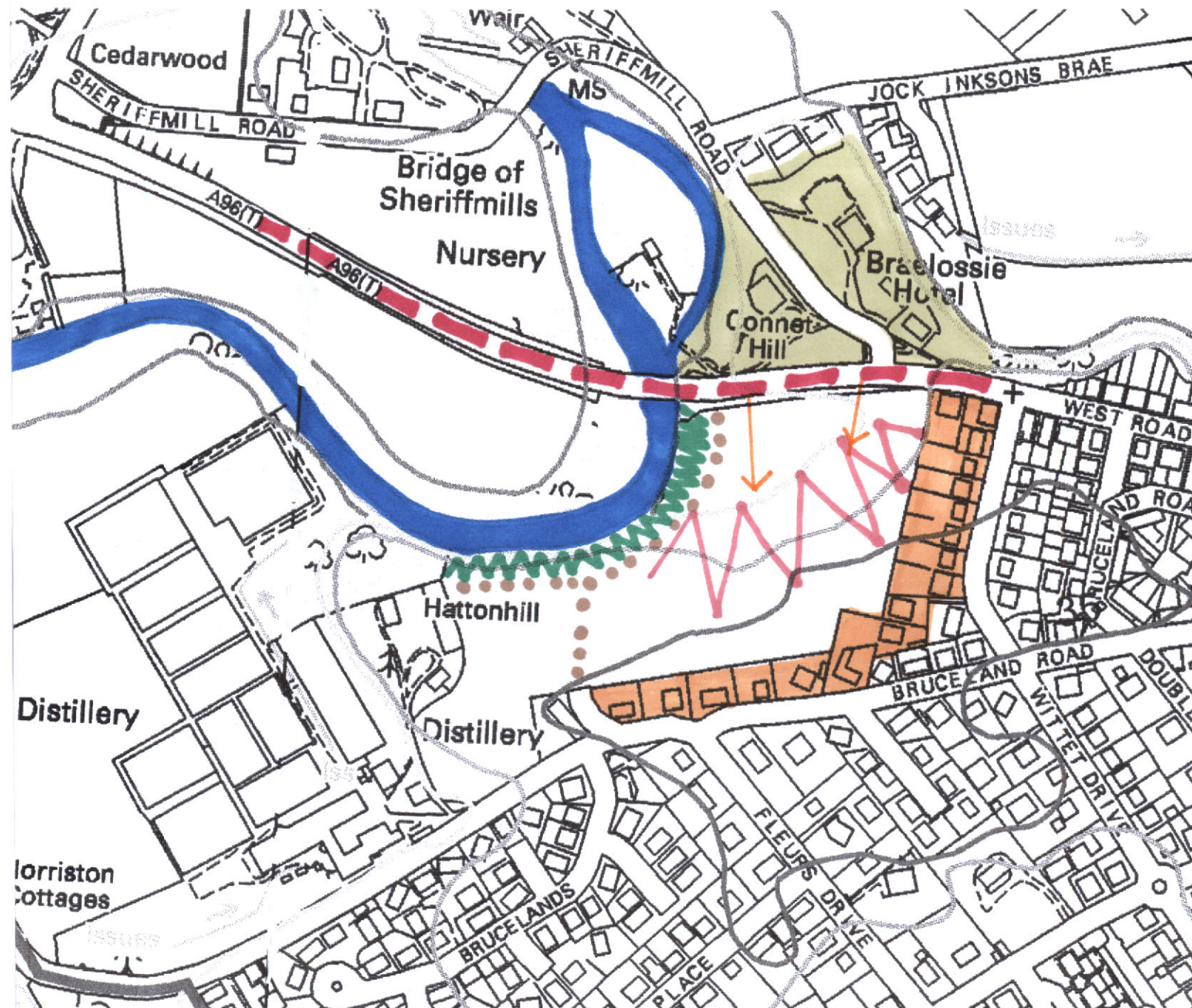
-  Steep wooded river banks
-  River Lossie
-  Steep slopes
-  A96
-  Informal footpaths

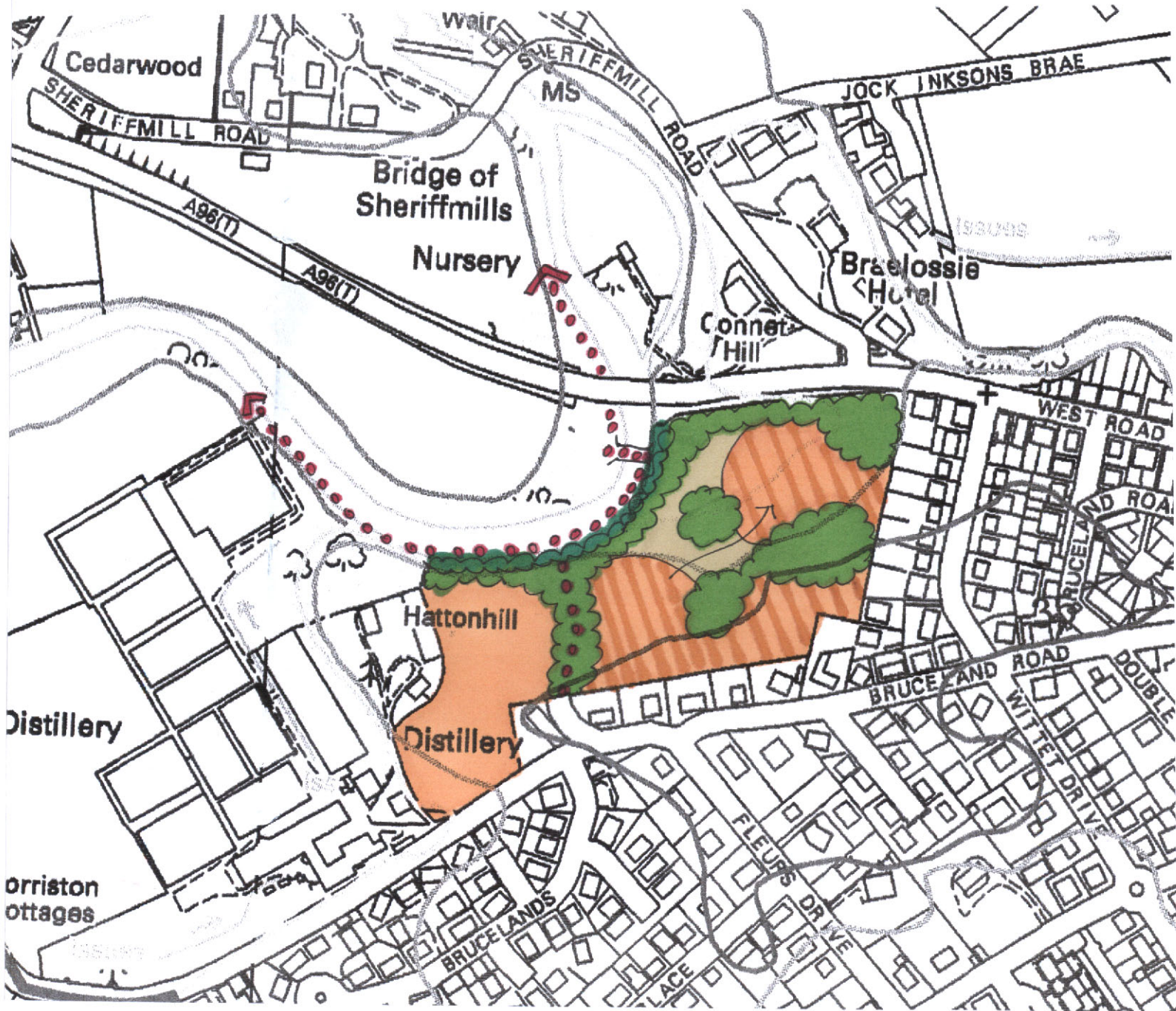
**Landscape Setting and Context**

-  Large houses on raised ground above the river floodplain and set within wooded grounds
-  Prominently sited houses at top of slope

**Views/Approach**

-  Close views from the A96





MORAY LOCAL PLAN

**Hattonhill, West Elgin**

**Landscape Proposals**

Scale 1:10,000

- Proposed denser housing development
- Proposed development of detached houses set in generous grounds
- New woodland structure planting
- Public open space
- Management of existing river bank woodland
- New footpath links to potential Riverside Walkway
- Proposed footbridge