

# Instrumental Music Services

---

*Results from Survey, March-May 2013*

The Improvement Service  
Westerton House  
Westerton Road  
East Mains Industrial Estate  
Broxburn  
EH52 5AU  
<http://www.improvementservice.org.uk/>

Tel: +44 (0) 1506 775558

## Table of Contents

<i>Executive Summary</i> .....	3
Introduction.....	6
Variation in Instrumental Music Services .....	7
Charges for tuition .....	7
Concessions.....	9
SQA Charges .....	11
Selection Procedures.....	14
Impact of Charging.....	15
Charging Structures: on a Local Level.....	20
What does this mean?.....	21
Danger of Standardisation and Legislating .....	22
Appendix 1: Phase 2 .....	24
Appendix 2: Summary Tables .....	30

## *Executive Summary*

This research was initiated to provide up-to-date information on the provision of instrumental (including voice) music services across Scotland. Instrumental Music is a discretionary service provided by all Local Authorities and is additional to the music curriculum taught within the classroom. This study concentrates solely on these discretionary services, outwith YMI funded tuition and the music curriculum.

Instrumental Music Services vary substantially across Local Authorities in Scotland. Policies include variations in tuition charges, concession rates, selection procedures, available instruments and hire, and additional activities. This makes any comparison between these services very complex and requires several considerations to be made.

The charging cost of instrumental tuition across Scotland ranges from no fee to over £300 per year. Despite this difference, there is no detectable relationship between the variation of tuition charges across Scotland and the percentage of pupils taking up instrumental music. Charging, therefore, does not have a substantial impact on the overall pupil uptake across Local Authorities in Scotland, indicating that other determining factors are operating.

Five Local Authorities currently charge pupils sitting SQA music awards for instrumental music tuition. It is possible for pupils to sit SQA music without this additional tuition by taking instruments available in the classroom. Nonetheless, four of these five Local Authorities are officially removing these charges next academic session. Amongst Local Authorities that do not charge for SQA music pupils, it varies whether they begin free tuition in S3 or S4, and whether these pupils are able to take up one or two instruments (outwith the classroom). This indicates the complexity of charging structures across Scotland. Several Local Authorities choose to limit tuition to one instrument per pupil to offer opportunities to more pupils.

Several Local Authorities proceed with selection procedures to identify pupils with aptitude and pupils who will benefit from tuition. These selection procedures vary across and, in some cases, within Local Authorities. Many services proceed with some form of aptitude tests to select the most suitable pupils for the instrument concerned. Although some services try to accommodate all interested pupils, in many Local Authorities this is simply not possible as demand highly outweighs resources.

Several Local Authorities expressed a rationale for introducing or increasing charges in order to sustain and maintain their service under financial constraints. As various services are already unable to meet popular demand, cutting the service owing to financial constraints could have further implications on available spaces and opportunities. Furthermore, there is no systematic relationship between the variation of tuition fees and the percentage of the education budget dedicated to Instrumental Music. In this sense, Local Authorities charging relatively highly for tuition are not necessarily putting any less of their education budget towards the service. Revenue from tuition does not cover the total cost of the service for any Local Authority; the total combined revenue from the 24 charging Authorities amounts to 19% of the total cost of these services. All instrumental music services are substantially subsidised by Local Government.

Furthermore, nearly all Local Authorities that charge for instrumental tuition have put in place some form of concession to protect equal access to the service, including exemptions or discounts to pupils from low-income households.

The fact there is no relationship between tuition fees and uptake percentages across Scotland, does not imply that introducing or increasing tuition charges does not have an impact on pupil numbers for an individual council. Several Heads of Instrumental Services expressed concern over the effect increasing charges has, especially for pupils just missing entitlement for concessions. A couple of Local Authorities have experienced a large or continuous decline in pupil numbers following an increase in charges. Nonetheless, these Authorities have reviewed their charging structure in response to this, and this decline is not a consistent occurrence. One Local Authority experienced a larger drop in pupil numbers following staff cuts than when they introduced charges. Therefore, changes in charging structures can influence pupil numbers, but so can staff cuts and other service reductions.

Although there are variations between Instrumental Music Policies; musical traditions and cultures also vary throughout Scotland, as do demography and income. A policy that is successful in one Local Authority would not necessarily be optimal for another. Popularity and demand vary between and within Local Authorities, therefore, requiring a local focus.

Overall, tuition charges are only one consideration regarding access to instrumental music tuition. Many other features such as range and number of instruments and instructors, and selection procedures also affect access to the service. No Local Authority in Scotland has a completely universal instrumental music service in the sense that any pupil can access tuition on any instrument. Nonetheless, there is no doubt about these services' commitment to provide the

optimal service given the resources available. Several Instrumental Music Services are very active, offering a large number of extra activities including music centres, bands, orchestras, ensembles and residential courses.

## Introduction

This research was initiated over concern with variation in instrumental (including voice) music provision across Local Authorities in Scotland. Some Local Authorities provide free tuition for all pupils while others charge over £300 per year. This raised concern over denied access and unequal opportunities across Scotland, with arguments that tuition needs to be equally accessible for all.

The main purpose of this report is to establish reliable baseline information on the current delivery of instrumental music tuition across Local Authorities in Scotland, and the charging practices that have been adopted in that context. Instrumental Music Services are discretionary services provided by Local Authorities and are additional to the music curriculum taught within the classroom. A questionnaire was distributed to all Heads of Instrumental Teaching across Scotland to collect up-to-date information on tuition charges, concession rates, pupil numbers and uptake, costs of services, range of instruments and teacher numbers.

A number of interviews were carried out following this questionnaire to include some in-depth knowledge into the rationale behind instrumental music policies. Six Local Authorities were interviewed from a selection of chargers and non-chargers: South Lanarkshire, Renfrewshire, Scottish Borders, Comhairle nan Eilean Siar, Midlothian and City of Edinburgh. A report from Phase 2 of the research is available at the end of this document (Appendix 1: Phase 2).

This is the first time data has been collected on this scale for instrumental music services and was on a tight timescale. Therefore, some consideration needs to be made when comparing figures between Local Authorities. Each Local Authority has their own recording mechanisms therefore some information may have been recorded slightly differently. This highlights the need for developing a reliable benchmarking framework for recording key measures across instrumental music provisions in a standard form. Any concerns about individual measures provided in this report and the summary tables are identified in the document.

# Variation in Instrumental Music Services

## Charges for tuition

Charges for instrumental music tuition was one of the main concerns raised in the campaign last year. The majority of Local Authorities charge for their Instrumental Music Service, however fees range from £44.40 +£20.40 per pupil, per year, for group lessons to £340 per pupil, per year, for one-to-one lessons.

- 24 out of the 32 Local Authorities charge for instrumental tuition.
- Mean fee per year: £166 per pupil; median fee per year: £155 per pupil (these averages are based on group<sup>1</sup> tuition charges and include hire where applicable – they do not include the 8 Local Authorities that do not charge for tuition)

**Table 1: Instrumental music tuition charges**

Local Authorities	Current charge for tuition, per pupil, per year
Aberdeen City	£272 Group, £340 Individual
Highland	£252
Perth & Kinross	£245.85
Clackmannanshire	£220
Dundee	£132 + £83 hire
Moray	£201 Group, £300 Individual
Aberdeenshire	£192 Group, £284 Individual
Stirling	£189 Group, £309 Individual
Angus	£183
South Lanarkshire	£180
Dumfries & Galloway	£130 + £47.16 hire
East Renfrewshire	£160 ( <i>lend instruments for 2 terms</i> )
Midlothian	£150
North Lanarkshire	£150
Renfrewshire	£150
East Dunbartonshire	£140
Shetland Islands	£140
Argyll & Bute	£138 ( <i>does not include hire</i> )
Fife	£125
Scottish Borders	£125
North Ayrshire	£120
East Ayrshire	£100 Group, £150 Individual
Inverclyde	£95.50
Falkirk	£44.40 Group + £20.40 Hire, £178.20 Individual

<sup>1</sup> When a council has separate costs for group/individual tuition

City of Edinburgh	Free tuition
Comhairle nan Eilean Siar	Free tuition
East Lothian	Free tuition
Glasgow City	Free tuition
Orkney Islands	Free tuition
South Ayrshire	Free tuition
West Dunbartonshire	Free tuition
West Lothian	Free tuition

It should be considered that tuition fees presented in the table above may cover a variety of additional activities, as well as tuition itself. In Dundee City £132 (+£83 hire) covers all additional activities including music centres, bands, ensembles and orchestras, these activities run every week between August and March adding an extra 1-2 hours of tuition per week. Aberdeen City's fees also cover free access to Music Centres. These are individual examples; several other Local Authorities have similar policies.

For the majority of Local Authorities the charge presented includes instrument hire (either combined in the overall charge or as a separate fee). The exceptions to this are Argyll & Bute Council, City of Edinburgh Council and East Renfrewshire Council. East Renfrewshire lend instruments to pupils for two terms when they begin tuition, in order for pupils to try out the instrument before committing to purchasing their own. Argyll & Bute's and the City of Edinburgh's Instrumental Music Services do not provide instruments. More details on the City of Edinburgh's instrument policy are available in the box below:

#### City of Edinburgh

*City of Edinburgh's instrumental music service do not maintain their own assembly of instruments but pay for a number of them that are kept and distributed by schools in their area. Schools across the City of Edinburgh have a collection of instruments, funded by either the school itself, the instrumental music service or parent councils, and distribute to pupils accordingly. If one school has surplus they may lend these instruments to other schools in the area. The instrumental music service encourages parents from more affluent areas to provide their own instruments, in order to offer more opportunities in disadvantaged areas. Instruments and instrument repair are some of City of Edinburgh's instrumental music services main concerns, several schools have asked for assistance with instrument repair but the service does not have a budget to provide this service.*

Measured on this scale Falkirk have the lowest tuition fees for instrumental music (outwith the eight Local Authorities that do not charge), however, they have a detailed charging structure with different tuition fees for different group sizes: £44.40 per year is based on pupils attending shared lessons of 4 pupils, for a shared lesson with only 2 pupils it would cost £87.90 (+ £20.40 hire) per year, and for one-to-one lessons £178.20 (+ £20.40 hire) per year<sup>2</sup>. This identifies the complexity of charging structures across Scotland – each Local Authority has their own policy, with charges covering different activities and offering different concessions, therefore these considerations must be taken into account when comparing between Councils.

## Concessions

Every Local Authority that charges for instrumental music tuition provides concessions on some level. For the purpose of this report concessions and exemption for pupils sitting SQA music awards are addressed within a separate section.

### Pupils from Low-income households

The majority of charging Local Authorities (19 out of 24) provide complete exemption from charges for pupils from low-income families. The measure used to qualify pupils for this concession varies but is often determined by Free School Meal entitlement.

Within several other Local Authorities charges are considerably reduced for pupils from low income households:

- Falkirk offer concession rates from £33.90 (+ £11.10 hire) for shared lessons with 4 pupils to £85.80 (+ £11.10 hire) for individual lessons<sup>3</sup>.
- Clackmannanshire offer half fees for pupils from households entitled to Housing Benefit or Income Support (£110 per year, per student).
- Stirling offer a concession rate of £63 per year to pupils entitled to free school meals or clothing grant.

---

<sup>2</sup> This charging structure is changing next academic year to a standard rate of £140 per pupil, per year (£55 for pupils entitled to Free School Meals)

<sup>3</sup> Falkirk: £56.40 + £11.10 per pupil, per year for shared lessons with 2 pupils,

- Renfrewshire currently offer a concession rate of £50 per year to pupils entitled to Free School Meals or Clothing Grants. They are replacing this concession rate to complete exemption from fees next academic session.

South Lanarkshire is the only Local Authority that currently does not provide any concessions for pupils from low-income households.

### Sibling Discount

Several Local Authorities (10) also provide reduced charges for second or subsequent siblings receiving instrumental tuition.

- Aberdeen City offer a 50% reduction for siblings (first instrument only)
- Renfrewshire offer a concession rate of £50 per year to second or subsequent siblings.
- Argyll and Bute offer a £15 reduction per year for second or subsequent siblings, or pupils taking more than one instrument.
- East Ayrshire offer a 50% reduction to second siblings, and full exemption from fees for third or subsequent siblings.
- East Dunbartonshire offer a 50% reduction to second or subsequent siblings.
- East Renfrewshire offer a 25% reduction to second or subsequent siblings.
- Falkirk offer a reduction on individual lesson charges to second or subsequent siblings.
- North Ayrshire offer a 50% reduction for second or subsequent siblings.
- North Lanarkshire offer a 50% reduction for second or subsequent siblings, or pupils taking a second instrument.
- Scottish Borders offer exemption from tuition fees for third or subsequent siblings.
- Aberdeenshire Council are introducing a sibling discount next academic session.

### Other Concessions:

- North Lanarkshire Council offers full exemption from tuition fees for pupils with Additional Support Needs.
- Inverclyde Council offers full exemption for Primary School Pupils.
- Argyll and Bute offer a 50% discount for pupils learning the bagpipes - Argyll Piping Trust Subsidy
- East Ayrshire, Argyll & Bute and Inverclyde offer 1 year free tuition.

- Midlothian Council provide 100 extra bursaries for families whose income is under £10,000 above the Free Meal Entitlement limit.
- In Highland families can request free tuition and will be considered under circumstance.

The percentage of instrumental music pupils that qualify for concessions significantly varies across Local Authorities. East Ayrshire has the highest with 83% of pupils receiving instrumental tuition qualifying for concessions (this includes pupils' first year of tuition, parents/carers on benefits, second or subsequent siblings, and pupils sitting SQA music exams). In Aberdeenshire 4.3% of pupils receiving tuition qualify for free school meals (more receive free tuition when sitting SQA music). *These figures need to be taken with care – some authorities have included pupils sitting SQA music in the concession figures while others have not, as presented in this comparison.*

## SQA Charges

One of the concerns highlighted in the campaign last year was that in some councils pupils sitting SQA music awards are charged for instrumental tuition. Instrumental music tuition is separate from the School music curriculum and it is possible for pupils to sit SQA music without receiving additional instruction (by taking instruments available in the classroom).

The majority of Local Authorities (27) provide free tuition for pupils sitting SQA music exams. Nonetheless, it varies between Local Authorities when this concession begins and whether pupils are able to take more than one instrument within the service.

Five Local Authorities currently charge pupils sitting SQA music for instrumental music tuition: Aberdeen City, Dumfries and Galloway, Highland, Midlothian and Renfrewshire. Dumfries and Galloway are removing all tuition charges next academic year. Midlothian and Highland are removing charges for SQA pupils next academic year. Renfrewshire currently only charge their concession rate of £50 per year but are also removing these charges next academic year.

The Scottish Borders do not charge pupils sitting SQA music exams for tuition but do charge for the hire of an instrument (£58 per year) if pupils are not paying tuition fees.

The table below presents instrumental music teaching policies for pupils sitting SQA music.

**Table 2 - Charging policies for SQA music pupils**

<b>Local Authority</b>	<b>Instrumental Music Tuition for SQA music pupils</b>	<b>Years included</b>
<b>Aberdeen City Council</b>	Currently no concession for pupils sitting SQA music.	
<b>Aberdeenshire Council</b>	Free tuition for pupils taking SQA music, however, second instruments are not normally offered - only in some circumstances (by the Head of Instrumental Service).	
<b>Angus Council</b>	Free tuition for pupils sitting SQA music on one instrument. Generally instrumental tuition is offered on one instrument only but if a pupil requires a second instrument for a conservatoire or University audition from S4 onwards, they try to accommodate this. This second instrument would need to be paid for - but concessions still apply (e.g. for pupils from low income households)	S4-S6
<b>Argyll &amp; Bute Council</b>	Free tuition for SQA pupils - this includes a second instrument if necessary but this situation does not arise very often	
<b>Clackmannanshire Council</b>	Free tuition for SQA pupils – this does not include a second instrument, Clackmannanshire’s IMS do not offer more than one instrument per pupil.	S3 - S6
<b>Stirling Council</b>	Free tuition for pupils sitting SQA music. Tuition for a second instrument is generally not offered in Stirling Council unless it cannot be offered to any other pupil - if this was the case the second instrument would be free.	
<b>Dumfries &amp; Galloway Council</b>	Currently no concession for pupils sitting SQA music but all tuition charges will be removed next academic session.	
<b>Dundee City Council</b>	Free tuition for pupils sitting SQA music – details beyond this are unknown.	
<b>East Ayrshire Council</b>	Free tuition for pupils sitting SQA music - this can include a second instrument as long as the pupil is using both instruments for SQA music.	
<b>East Dunbartonshire Council</b>	Free tuition for pupils sitting SQA music, however, from next session East Dunbartonshire will charge pupils for a second instrument at SQA (outwith classroom instruments).	
<b>East Renfrewshire Council</b>	Free tuition to pupils sitting SQA music on one instrument. Tuition on a second instrument is not offered to maximise opportunities for pupils throughout the Local Authority.	S3 - S6
<b>Falkirk Council</b>	Currently Falkirk offer free tuition for SQA music pupils on one instrument only (from S3). From next year Falkirk will also offer free tuition on a second instrument at SQA.	Next year S4 - S6
<b>Fife Council</b>	Free tuition for pupils sitting SQA music. Fife do not charge per instrument but for participation in the Instrumental Music Scheme - however tuition is generally limited to one instrument per pupil (to offer tuition to more pupils), only in exceptional cases will tuition be offered on more than one instrument.	S4 - S6

<b>Highland Council</b>	Currently no concession for pupils sitting SQA music. Highland are removing charges for SQA pupils next academic session.	
<b>Inverclyde Council</b>	Free tuition for all pupils sitting SQA music. Inverclyde tried to introduce charges on a second instrument but this proved very difficult and plans were abolished	S3 - S6
<b>Midlothian Council</b>	From next academic session Midlothian will offer free tuition for pupils sitting SQA music on one instrument. Midlothian offer exemptions on one instrument only - this is the case for FME pupils and Bursary pupils also.	
<b>Moray Council</b>	Free tuition for pupils sitting SQA music, however, Moray Council only offer tuition on one instrument per pupil (including SQA)	S4 - S6
<b>North Ayrshire Council</b>	Free tuition for all SQA pupils, this includes tuition on more than one instrument.	S2 - S6
<b>North Lanarkshire Council</b>	Free tuition for pupils sitting SQA music - this includes tuition on more than one instrument.	
<b>Perth &amp; Kinross Council</b>	Free tuition for pupils sitting SQA music – details beyond this are unknown.	
<b>Renfrewshire Council</b>	From next session Renfrewshire will offer complete exemption from charges to pupils sitting SQA music awards (on more than one instrument if necessary). Renfrewshire currently charge concession rate of £50 per year to pupils sitting SQA music (S3 - S6).	From next year: S4 - S6
<b>Scottish Borders Council</b>	Free tuition for SQA music pupils on one instrument only, but charge £58 for instrument hire.	
<b>Shetland Islands Council</b>	Free tuition for pupils sitting SQA music – details beyond this are unknown.	S3 - S6
<b>South Lanarkshire Council</b>	Free tuition for all SQA music pupils, including on a second instrument if necessary.	S4 - S6

The range of policies presented above again indicates the complexity of charging structures across Scotland. Out of the Local Authorities that provide (or plan to provide) exemptions from tuition fees to pupils sitting SQA music awards, eight offer free tuition to all SQA music pupils, including a second instrument if necessary. Four Local Authorities offer free tuition on one instrument but a second would need to be paid for and a further six Local Authorities offer free tuition but do not offer a second instrument (paid or otherwise) albeit special circumstances. For the remaining Local Authorities: Dumfries and Galloway are removing all charges next year, and Shetland Islands, Perth & Kinross and Dundee City all provide free tuition to pupils sitting SQA music; however details

beyond this are unknown. Highland are removing charges to pupils sitting SQA music next academic session, details beyond this are also unknown.

This again highlights the difficulty in assessing instrumental music – despite the majority of Local Authorities providing free tuition for pupils sitting SQA music awards, only a selection of these Authorities provide free tuition on more than one instrument. Others offer free tuition on one instrument and second must be paid for and several generally do not offer second instruments. The rationale to offer one instrument per pupil is to enable more pupils to access the service. Within the majority of Instrumental Music Services there are limited tuition spaces, this is discussed further in the following section.

## Selection Procedures

Several Local Authorities carry out selection processes to identify pupils with aptitude and pupils who will benefit from tuition. These selection procedures vary across and, in some cases, within Local Authorities. A number of Local Authorities do not have any form of testing, others test but only to match appropriate instruments with pupils, and others use tests to select successful applicants. Although some services try to accommodate all interested pupils, in many Local Authorities this is simply not possible because demand highly outweighs resources.

Out of the total number of pupils applying, the proportion of successful applicants varies. In East Ayrshire approximately half of applicants are selected for tuition (about 430 out of approximately 800 pupils). In Moray, precise figures are unavailable but approximately 4 to 5 pupils apply for every 1 space available in strings, and approximately 2 to 3 pupils apply for every 1 space available in woodwind, brass and percussion. Within a number of councils aptitude tests are carried out with nearly all pupils in the appropriate year group – subject to parental permission – pupils with the highest scores are then offered tuition. *For more examples of selection procedures see Appendix 2, table 10.*

Alternatively, several councils do not have any form of assessment at all and try to provide for any interested pupil. Comhairle nan Eilean Siar has an open access policy, however there still may be negotiations involved, such as if a particular instrument is very popular.

This demonstrates there are other restrictions to access than charging. Out of the Local Authorities interviewed within phase 2 of this study, all who had increased or introduced charges recently, did

so due to financial reasons. These Local Authorities chose to increase or introduce charges to help protect and maintain their service. As various instrumental music services are already unable to meet popular demand, cutting the service due to financial constraints could have further implications on tuition spaces and available opportunities. *Rationales for introducing and increasing charges are discussed further in Appendix 1.*

## Impact of Charging

A number of analyses took place to evaluate the impact tuition charges have on the variation of uptake and percentage of education budgets allocated for Instrumental Music. The table below displays the percentage of instrumental music uptake across Local Authorities in Scotland and the number of pupils per one Full Time Equivalent Teacher.

**Table 3: Uptake %'s and number of pupils per FTE**

Local Authority	Tuition fee, per pupil, per year, 2012/13	No. Pupils per 1 FTE teacher <sup>4</sup>	% of pupils who take up instrumental music, out of the total Primary and Secondary School Roll <sup>5</sup>
<b>Aberdeen City Council</b>	£272 (Group) £340 (Individual)	59	8.2%
<b>Highland Council</b>	£252	78	9.6%
<b>Perth &amp; Kinross Council</b>	£245.95	93	9.5%
<b>Clackmannanshire Council</b>	£220	91	6.6%
<b>Dundee City</b>	£132 + £83 hire	109	12.8%
<b>Moray</b>	£201 (Group) £300 (Individual)	87	7%
<b>Aberdeenshire Council</b>	£192 (Group) £284 (Individual)	59	6.4%
<b>Stirling Council</b>	£189 (Group) £309 (Individual)	63	6.5%
<b>Angus Council</b>	£183	83	9.7%
<b>South Lanarkshire Council</b>	£180	97	6.9%
<b>Dumfries &amp; Galloway</b>	£130 +£47.16 hire	68	6.2%

<sup>4</sup> Rate based on most recent pupil/teacher figures available

<sup>5</sup> The percentage of pupils who take up instrumental tuition is calculated out of the total Primary and Secondary School Roll for each Local Authority. This, therefore, does not reflect the percentage out of the population of entitlement which would likely be considerably higher for all Local Authorities.

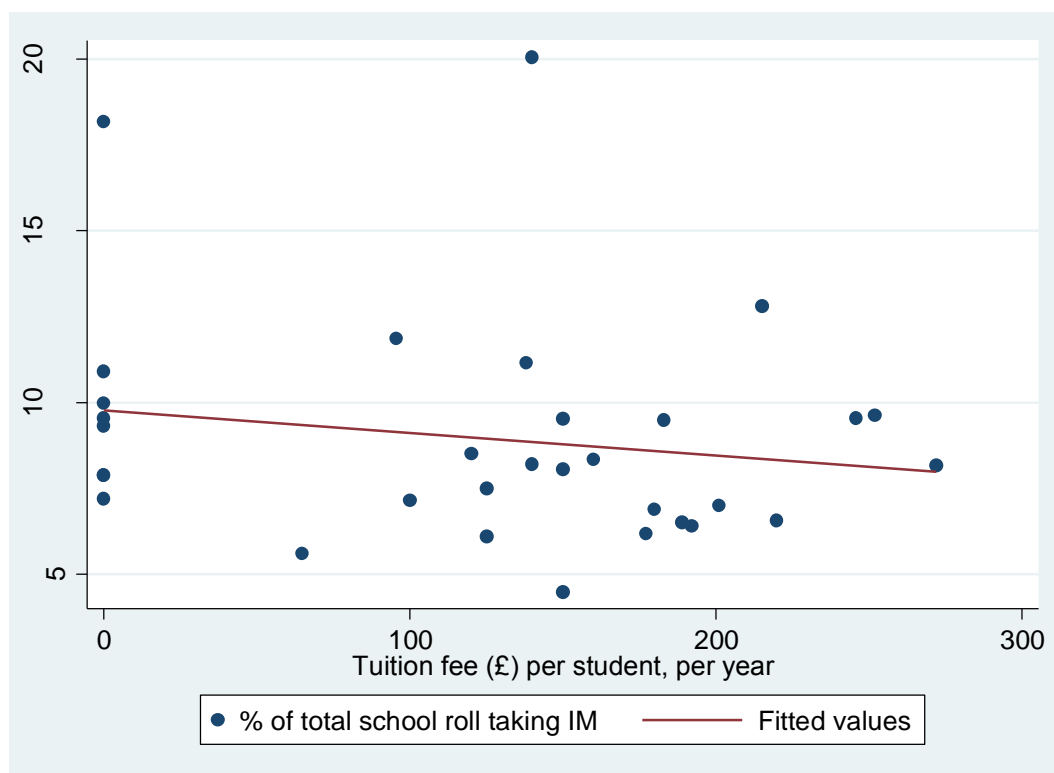
Council			
East Renfrewshire Council	£160	102	11.1%
Midlothian Council	£150	78	9.5%
North Lanarkshire Council	£150	117	8.1%
Renfrewshire Council	£150	91	4.5%
East Dunbartonshire	£140	83	8.2%
Shetland Islands Council	£140	110	20%
Argyll & Bute Council	£138 (does not include hire)	77	11.1%
Fife Council	£125	97	7.5%
Scottish Borders Council	£125	93	6.2%
North Ayrshire Council	£120	101	7.8%
East Ayrshire Council	£100 (Group) £150 (Individual)	84	7.2%
Inverclyde Council	£95.50	77	11.9%
Falkirk Council	£44.40 Group +£20.40 hire, £178.20 (Individual)	66	5.6%
Glasgow City Council	Free tuition	84	7.2%
West Dunbartonshire Council	Free tuition	107	7.9%
West Lothian Council	Free tuition	94	9.3%
Comhairle nan Eilean Siar (Western Isles)	Free tuition	120	10%
City of Edinburgh Council	Free tuition	88	10.9%
East Lothian Council	Free tuition	78	9.6%
Orkney Islands Council	Free tuition	85	18%
South Ayrshire Council	Free tuition	94	7.9%

*The percentage of pupils taking instrumental tuition is calculated out of the total Primary and Secondary School Roll for each Local Authority and does not include YMI or pupils attending music centres. This, therefore, does not reflect the percentage out of pupils who are entitled to instrumental tuition. The percentage out of population of entitlement would likely be considerably higher for all Local Authorities.*

### **Pupil Uptake**

A series of analyses were carried out to investigate the relationship between the variation of tuition fees and the percentage of pupils taking up instrumental music tuition across Local Authorities in Scotland. The following chart displays the Percentage of pupils taking instrumental tuition (out of total school rolls) for each Local Authority, sorted by charging costs.

Figure 1 - Uptake %'s by tuition fees

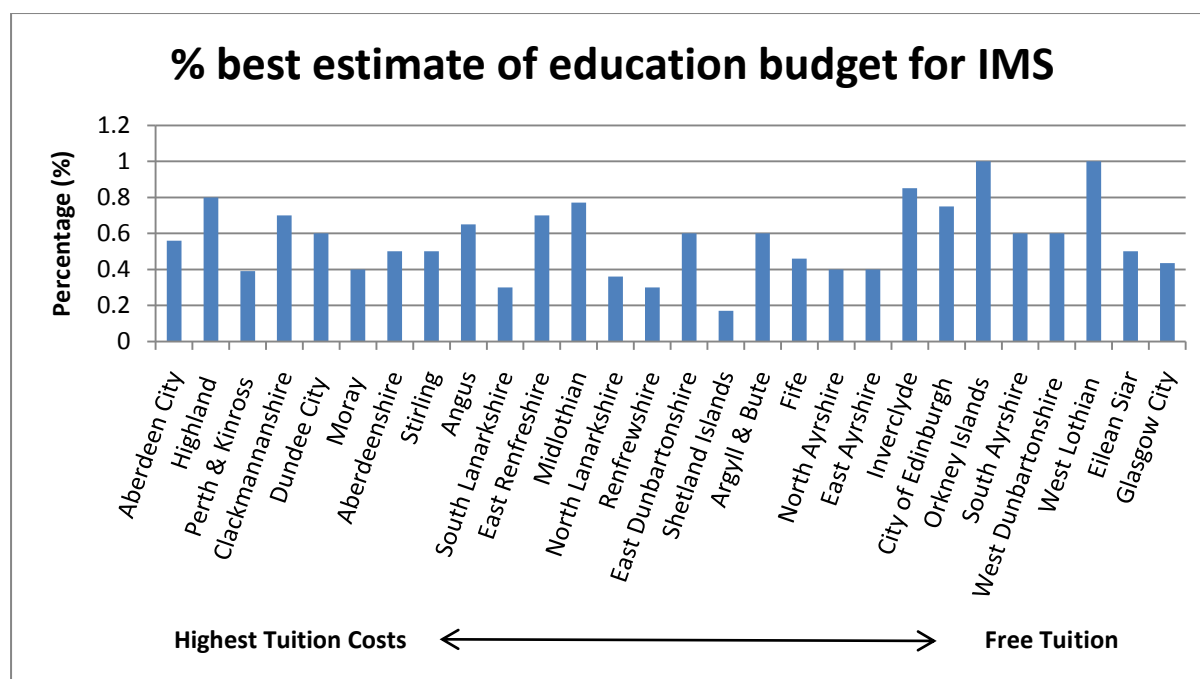


There is no significant relationship ( $p > 0.1$ ) between the variation of tuition fees and the percentage of pupils taking instrumental music tuition across Local Authorities in Scotland. Therefore, Instrumental Music Services with relatively high tuition fees do not necessarily have a lower percentage of uptake than Local Authorities that offer free tuition.

### *% of Education Budget*

Furthermore, there is no significant ( $p > 0.1$ ) relationship between the variation of tuition fees and the percentage of education budget used for Instrumental Music Services. Many high charging Local Authorities also put a relatively high proportion of their education budget towards the service. These best estimate percentages are displayed in the chart below.

Figure 2 - best estimate % of education budget



All Instrumental Music Services across Scotland are subsidised by their Local Authority. Revenue from tuition fees does not cover the total cost of the service in any Local Authority. Revenue covers from just under 50% of the total cost in East Dunbartonshire to 4% in East Lothian. Overall the combined revenue from charging Instrumental Music Services amounts to 19% of the total cost for these services<sup>6</sup>.

Table 4 - Revenue from charges, Total Cost of IMS

Local Authority	Revenue from Charges	% of Total Cost	Estimated total cost
Aberdeen City Council	£456,800	36%	£1,268,889
Aberdeenshire Council	£314,001	20%	£1,570,000
Angus Council	£155,904	19.7%	£792,747
Argyll & Bute Council	£89,992	12%	£737,639
Clackmannanshire Council	£35,000	14%	£259,259
Stirling Council	£86,000	17%	£521,212
Dumfries & Galloway Council	£160,000	21%	£761,905
Dundee City Council	£111,360	12%	£928,000
East Ayrshire Council	£22,000	4%	£550,000
East Dunbartonshire Council	£97,780	50%	£196,740
East Renfrewshire Council	£220,720	21%	£1,051,048
Falkirk Council	£45,000	6.4%	£700,500

<sup>6</sup> This does not include the eight non-charging Local Authorities, see Appendix 2, table 12.

<b>Fife Council</b>	£197,119	11%	£1,729,114
<b>Highland Council</b>	£647,000	35%	£1,848,571
<b>Inverclyde Council</b>	£15,089 (20% debt incurred)		£697,189.25
<b>Midlothian Council</b>	£120,000	21%	£571,429
<b>Moray Council</b>	£133,000	28%	£470,000
<b>North Ayrshire Council</b>	£94,790	17%	£564,226
<b>North Lanarkshire Council</b>	£181,000	14%	£1,283,688
<b>Perth &amp; Kinross Council</b>	£251,951	29%	£868,797
<b>Renfrewshire Council</b>	£87,285	17%	£513,441
<b>Scottish Borders Council</b>	£66,126	14.1%	£468,564
<b>Shetland Islands Council</b>	£68,865	11%	£626,045
<b>South Lanarkshire Council</b>	£150,000	17%	£872,093
<b>Total</b>	<b>£3,806,782</b>		<b>£19,851,096</b>

This indicates that charging for instrumental tuition does not imply any less of a commitment from a Local Authority. All instrumental music services are heavily subsidised by Local Government. Furthermore, there is no systematic relationship between tuition fees and the percentage of pupils taking instrumental music tuition. Therefore, variation across Scotland in uptake rates and proportion of education budgets dedicated to Instrumental Music are not explained by the charging costs of tuition.

### *Private Sponsorship*

Very few Instrumental Music Services receive any private sponsorship.

- Argyll and Bute Council gain approximately £25,000 from external sponsors,
- East Renfrewshire gains approximately £3-4000 per year from *Friends of East Renfrewshire School's Music*.

East Dunbartonshire has an effective parent support group, which as a registered charity is able to access funding sources that would otherwise be closed. This additional funding goes towards financially supporting pupils attending residential courses.

Comhairle nan Eilean Siar used to receive considerable private sponsorship but in recent years this has been discontinued.

## Charging Structures: on a Local Level

This does not imply that introducing or increasing charges does not affect pupil numbers and access in individual councils. The impact of introducing or increasing charges has different results in different Local Authorities. Midlothian and South Lanarkshire Councils both introduced charges in 2011/12 and subsequently experienced a drop in pupil numbers. Midlothian's instrumental pupil numbers fell by approximately 12% from the previous year, however the service was expecting a considerably larger decrease. The service experienced a greater drop in pupil numbers when they implemented staff cuts a year beforehand (13.3%). South Lanarkshire's numbers fell substantially in the first year of charges (by 32% from the previous year) but numbers have increased again in 2012/13 (19% increase on 2011/12 figures). North Lanarkshire's Instrumental Music Service had a similar experience when they re-introduced charges in 2010/11, pupil numbers fell and have risen back since, but the service are concerned of the impact on pupils from middle-income households, who are not entitled to concessions.

On the other hand, Renfrewshire's instrumental music tuition service has experienced an on-going decrease in numbers over the past few years since increasing charges (over 40% decrease from 2008/9 figures). When charges were increased 3 years ago, pupil numbers dropped by 10-15%, they have continued to fall further every year since then. Dumfries and Galloway introduced charges for the last two academic sessions and are subsequently dropping these charges next year. This year the service experienced a drop in pupil numbers by approximately 42% from 2011/12 figures.

### Renfrewshire

*Although in consultation, parents opted to pay higher fees rather than lose parts of the instrumental music service, there is anecdotal evidence to suggest that cost is having an influence on pupil numbers, especially among households just above Free School Meal entitlement. Renfrewshire have recently reviewed their IMS charging policy and are replacing the £50 concession rate for FSM entitlement and SQA pupils to complete exemption.*

In this sense charging structures can impact on pupil numbers in individual Local Authorities and should be considered in accordance to this. Charging structures need to be revised and monitored in the local context to review access and protect equal opportunities.

There are a number of good-practice principles Local Authorities should consider when devising charging structures. These should include consultation and engagement with the public, and regular monitoring of the service – especially after increasing or introducing tuition fees. From phase 2 of this study it is clear that several Local Authorities are already doing this, if not in a formal process but an informal one.

## What does this mean?

Overall, across Local Authorities in Scotland there are substantial variations between instrumental music services. Each Council has its own policy and delivery, making it very difficult to compare Instrumental Music Services without a number of considerations to be taken into account. Charges range from free tuition to over £300 per year. Nonetheless, results have illustrated little relationship between the variation of tuition fees and take up rates, % of education budgets or pupil to teacher ratios. Continuously, significant variation exists between authorities with very similar charging policies, suggesting many variables, other than tuition fees, contribute to these figures. This does not imply that charging structures do not impact pupil numbers and access, it is evident in several cases that they can, it is therefore important for Local Authorities to review and monitor their charging structures in the local context to protect access and equal opportunities.

Nonetheless, many variables contribute to access to tuition, staff cuts and service reductions can also impact on the number of pupils. No Local Authority in Scotland provides completely universal tuition in the sense that any pupil can access tuition for any instrument they desire. There are restrictions or processes in all Local Authorities, either by selection processes, charging, range and number of instruments or spaces available. Each Local Authority and Instrumental Music Service has to determine their policy in accordance with their budget.

## Danger of Standardisation and Legislating

It is clear from the information presented, there are a vast variety of instrumental music policies. Instrumental Music Tuition is a discretionary service, it is therefore open to review in terms of its scale, scope and funding in a way that basic provision of school places is not. From charges to concessions, from selection processes to available instruments, every Local Authority has their own policy based on different resources, public opinion and traditions. Policies appropriate to one particular council may not be optimal for another, within follow up interviews authorities indicated that traditions do not just vary between councils but within, highlighting the need for local considerations to be made. Furthermore, the variety across Councils exists on many different levels. If some aspects of music tuition are standardised there will be other areas of variation still remaining.

The table below presents a list of provisions that would all need considered if attempting to standardise Instrumental Music Services. This further emphasises the complexity of instrumental music provision and the caution and awareness that must be considered when comparing these policies.

Table 5 - Table of variations

		Additional Information
<b>Tuition fee</b>	Per lesson? Per instrument? Per service?	<i>Currently some Local Authorities charge per instrument, others charge for participation in the Instrumental Scheme.</i>
	Individual lessons	<i>Several Local Authorities have different charges for Individual or Group lessons</i>
	Group Lessons	
<b>Number of hours</b>	Per week	
	Per year	
<b>Class size</b>	Different for different instruments	<i>Currently class sizes differ between instruments and popularity – this differs within and between Local Authorities.</i>
<b>Instruments</b>	Range	<i>Currently different instruments are popular in different areas, within and between Councils.</i>
	Numbers	
	Number of Instructors	
<b>Selection Process</b>	Procedure	<i>Currently selection procedures differ between and within Local Authorities.</i>
	Pupil Numbers	
<b>Number of instruments per pupil</b>		<i>Currently some Local Authorities restrict pupils to one instrument in order to offer tuition to more pupils.</i>
<b>Year/age pupils begin lessons</b>		<i>The year/age pupils begin lessons differs between instruments – and Local Authorities</i>
<b>Additional Activities</b>	Charge	<i>Some Local Authorities include additional</i>

	Number of hours Residential Courses Bands, Orchestras, ensembles, Music Centres	<i>activities in their tuition fees – others do not. The range of bands, orchestras and ensembles differ between and within Local Authorities depending upon resources and local traditions.</i>
<b>Concessions</b>	Level of concession How to qualify Pupils from Low Income Households Second or subsequent siblings Pupils with ASN Additional concessions	<i>The majority of Local Authorities provide concessions for pupils from low income households – however, how pupils qualify for this concession and the level (free or discount) varies. Several Local Authorities provide concession rates for second or subsequent siblings taking music tuition. One Local Authority provides free tuition for pupils with additional support needs.</i>
<b>SQA</b>	Charge SQA starting year – S3 or S4 Number of instruments included (outwith classroom) hire	<i>The majority of Local Authorities offer free tuition for pupils sitting SQA music, however, for several this only includes one instrument per pupil– a second instrument (outwith classroom) would need to be paid for. Others do not offer tuition on a second or subsequent instrument at all, or only in exceptional circumstances. The majority of Local Authorities include hire, but not all. It also differs whether free tuition begins for these pupils in S3 or S4.</i>
<b>Instrument Hire</b>	Procedure Charge	<i>The majority of Local Authorities provide instruments, however, some charge, and a couple do not provide instruments.</i>

## Appendix 1: Phase 2

### *Introduction*

This research was initiated to establish reliable baseline information on the provision of instrumental music services across Scotland. The study was addressed in two phases: collection of factual information from all 32 Local Authorities and in-depth interviews with 6 Local Authorities into the reasons behind their policies. The following discussion is primarily based on the second phase of research to include in-depth knowledge into the rationale behind instrumental music policies. Six Local Authorities were interviewed from a selection of chargers and non-chargers: South Lanarkshire, Renfrewshire, Scottish Borders, Comhairle nan Eilean Siar, Midlothian and City of Edinburgh. Interviews were carried out with a combination of Directors of Education, Heads of Education and Heads of Instrumental Services.

### **Sustaining services under financial pressures**

Five of the Instrumental Music Services interviewed within phase 2 of this study expressed having had significant financial pressure at some point over the past ten years. Several have had to review the delivery of their instrumental music service, with three of the six Local Authorities introducing or increasing charges in recent years. This has received different responses across councils, with some communities much more vocal and opposed to fees than others.

#### *Introduction and Increase in Charges:*

Across Scotland, seven Local Authorities have introduced (or re-introduced) charges since 2007: South Lanarkshire, Midlothian, East Ayrshire, North Ayrshire, North Lanarkshire, Shetland Islands and Dumfries and Galloway. Dumfries and Galloway have subsequently decided to remove these charges next year. Seventeen Local Authorities have also increased their charges since 2007.

Three Local Authorities interviewed within this study have introduced or increased charges for instrumental tuition over the past few years. All three of these services did so to protect their service under financial constraints. Midlothian and South Lanarkshire both introduced charges in

2011 to sustain and maintain their service when budgets became strained. Midlothian council's instrumental music service had already previously been forced to make redundancies, and with more cuts on the horizon, chose to introduce charges to prevent the service from reducing any further. In South Lanarkshire Council numerous policies for non-statutory provisions were being revised at the time; to avoid cutbacks, charges for tuition were introduced at this point.

For similar reasons, several councils have increased charges over this period. Three years ago Renfrewshire doubled their charges from £75 to £150 per year, in order to protect and maintain their service. The council were reviewing a number of non-statutory provisions at the time, one of which being music tuition.

Approximately 10 years ago, the Scottish Border's Music Service also experienced financial pressures after a series of over-spends and proposed cuts across the Authority. With numerous provisions under review the council proposed increasing charges for instrumental music tuition. The community were very against this proposal and over the past 10 years extra finance for the service has alternatively been sourced from the education budget, rather than being charged to parents/carers. This is discussed further in the following section.

### *Community and Political Reaction:*

Community reaction to instrumental tuition fees differs across Local Authorities. South Lanarkshire, Midlothian and Renfrewshire received relatively little community resistance to introducing/increasing charges for instrumental tuition. South Lanarkshire received much less political resistance than they were expecting when they proposed charges; overall the community generally accepted the implementation. Midlothian Council received a lot of feedback upon their proposal to introduce tuition charges but similarly received less resistance than expected. Generally, councillors and parents within Midlothian understood and recognised the rationale behind this implementation.

When Renfrewshire increased tuition charges three years ago there were a series of provisions under review at the time. Within this review, parents were consulted about a series of provisions<sup>7</sup>, one question being whether they would be willing to pay more for instrumental music tuition. The

---

<sup>7</sup> "Difficult Choices, Difficult Times"

response concluded that parents would prefer to pay more for tuition and sustain the standard, than lose parts of the service.

On the other hand, as mentioned previously, the Scottish Borders had a very different experience when they proposed to increase charges ten years ago. The community were very vocal about opposing these increases. There were a number of proposals across different provisions at the time and music tuition received the largest response from the public. The variation between this experience and that of other authorities may well be time point: Borders experience was pre-recession and under circumstances where the authority was widely seen to have mismanaged the Education budget. The other experiences are post-recession and parents and communities are probably much more aware of the constraints authorities face.

Comhairle nan Eilean Siar's instrumental music service are currently under significant pressure to meet demand. The authority currently provides free tuition but the service has traditionally had access to considerable private funding from local organisations. In recent years this has been discontinued. The service is currently not able to provide for all pupils leaving primary school, with some pupils having to give up instruments because their secondary school cannot accommodate them. The instrumental service proposed introducing charges for tuition, however, this has received a very negative response from councillors and is very unlikely to proceed. In light of this the service are currently revising new ways of delivering their tuition, see below.

### *New Methods of Instruction:*

Comhairle nan Eilean Siar's instrumental music service are currently revising new delivery methods for music tuition, by innovative use of ICT, e-learning and video conferencing. The secondary schools timetables are currently being integrated into a common one, so all pupils will have access to tuition simultaneously via video-conferencing. This will save fuel costs and enable more pupils to access the service. Comhairle nan Eilean Siar only have 3 FTE teachers for 360 pupils. This will improve efficiency of resources, and make better use of specialist instruction.

This is just one example from the selected 6 Local Authorities; there are other music services across Scotland also introducing similar methods. This is a great example of how services may be able to cut costs and provide a more efficient service. Using innovative methods of tuition could make more effective use of instructors and help offer the service to more pupils.

### *Responding to Public Opinion:*

Although relatively few councils have formally consulted the public in relation to instrumental tuition, several have held informal discussions and meetings upon the subject of charging. Within three of the councils interviewed, the surrounding community generally accepted the introduction/increase of charges. In the Scottish Borders, when proposals were rejected, the authority reconsidered and did not increase their charges. The Scottish Borders are still very reluctant to increase charges and will only do so in line with inflation next year. Similarly, in Comhairle nan Eilean Siar, councillors are very opposed to the introduction of tuition costs, therefore the service are looking at alternative ways to save costs.

Several Local Authorities expressed how they work alongside community groups – offering pathways for pupils. These community ensembles do not replace instrumental tuition but offer opportunities outwith the instrumental service’s own ensembles and bands.

It is evident that these Local Authorities and their instrumental music services aim at responding to public opinion in their communities. In Authorities where political or community backlash has become evident, the service have re-evaluated their proposals and turned to other possibilities.

City of Edinburgh council do not charge for instrumental tuition, each year the budget is reviewed but there is currently no political will to introduce charges. The City of Edinburgh’s Instrumental Music Service has a considerable budget from the council and the service is embedded in the principles of GIRFEC and Curriculum for excellence. Their main reason for providing free tuition is to provide an accessible service regardless of a pupil’s background.

### *Positives of introducing charges*

There are a number of positive aspects that can come from introducing charges for instrumental tuition, alongside the added monetary source. Midlothian’s instrumental music service experienced a decrease in dropout rates over the course of the year when charges were introduced. Tuition costs are paid yearly, either as monthly direct debit (yearly contract) or as a one-off payment. For this reason, once a pupil is signed up for music tuition they are more likely to continue for the whole

year. South Lanarkshire also note that those paying for tuition have a very low dropout rate during the school session.

Furthermore, Midlothian also recognise that since introducing charges, parents/carers have become more involved in the service: they take a larger interest in music instruction and are very supportive of their regional ensembles.

## SQA music

One of the concerns highlighted in the campaign last year was that in some councils pupils sitting SQA music exams are charged for instrumental tuition. Instrumental music tuition is separate from the School music curriculum and it is possible for pupils to sit SQA music without receiving additional instruction.

In Midlothian a considerable number of pupils take SQA music without tuition outwith the classroom. Midlothian currently charges pupils sitting SQA exams for music tuition<sup>8</sup> but this has always been the case, even before they introduced charges in 2010/11.

On the other hand, it was mentioned by one authority that SQA music curriculums and teacher capacities vary between schools; therefore, the curriculum needs to be supplemented with free instrumental tuition for these pupils.

## Dedication and Value of Instrumental Music Services

It is clear from the interviews and additional information provided by Local Authorities that Instrumental Music Services within Scotland are very proactive, and determined to provide a high-quality and valued service. Several services noted the success of ensembles, bands and orchestras in their area.

Plenty of anecdotal evidence suggests that instrumental tuition has a positive effect in wider disciplines of education and learning. Renfrewshire's instrumental service carried out a survey among parents and 85% agreed that instrumental tuition provides further benefits in education; overall parents had a very positive response and appreciated the service. In Midlothian, head

---

<sup>8</sup> Midlothian are removing these charges next year

teachers have indicated improvement of classes after beginning music projects. From the Local Authorities selected for interview it was noted that instrumental music is a valued service within their Local Authorities and communities.

## What this means

From phase 2 of this study, it is clear that all instrumental services are determined to provide the best possible service, under tight budgets. Five of the six Local Authorities interviewed within Phase 2 have experienced significant financial constraints, having had to review their service as a consequence of this. Several Councils have held informal meetings with communities and responded accordingly. Where there has been a significant political or community backlash, Local Authorities and their instrumental music policies have reconsidered the proposal and made alternative provisions.

It is clear from this study that many instrumental music services are utilising their resources to the limits and from the evidence collected there is no question about the commitment of these services. Financial implications have to be considered, cutting charges or providing tuition for all interested pupils in some Local Authorities may have wider implications, or simply not be possible under current budgets.

Overall it is important for Instrumental Music Services to consider best practice via consultation with parents, providing appropriate concessions and reviewing/monitoring their policies regularly. From anecdotal evidence expressed in interviews, several Local Authorities are already doing this, if not in a formal process but an informal one. All the Instrumental Music Services spoken to in the second phase of research aim to provide for everyone's best interest and be as inclusive as possible

## Appendix 2: Summary Tables

Table-1: Charges and Concessions, Local Authorities currently charging pupils sitting SQA music.....	31
Table 2: Charges and concessions, Local Authorities not charging SQA music pupils.....	33
Table 3: Local Authorities not charging .....	36
Table 4: Revenue and Costs, Local Authorities charging SQA first .....	37
Table 5: Changes in charging and Pupil uptake, Local Authorities charging SQA first .....	39
Table 6: Number of pupils over past 5 years .....	43
Table 7: Number of teachers over past 5 years .....	45
Table 8: Number of teachers by discipline .....	47
Table 9: Number of Instrumental Music teachers, FTE, Part time and Class Size .....	49
Table 10 - Selection Processes and Drop-out rates .....	50
Table 11 - Total Cost of Instrumental Music Service, 24 Local Authorities charging for instrumental instruction .....	56
Table 12 - Total Cost of Instrumental Music Service, 8 Non-charging Local Authorities.....	57

Table-6: Charges and Concessions, Local Authorities currently charging pupils sitting SQA music

Local Authority	Charge for Music Tuition? Yes/No	Tuition fee (per pupil, per year), 2012/13	Charge pupils sitting SQA music ? Yes/No	Notes	Concessions	% of pupils qualify for concessions
<b>Aberdeen City Council</b>	Yes	£340 (Individual), £272 (Group)	Yes	<i>Provide Music Centres free of charge for fee paying pupils.</i>	Full Concession for pupils entitled to Free School Meals. Families receiving Income support, Income based Job Seekers allowance, Child Tax Credit with income under £15,860, Child Tax Credit and Working Tax Credit annual income under £6,420. 50% reduction for siblings on first instrument only.	10%
<b>Dumfries &amp; Galloway Council</b>	Yes	£130 + £47.15 instrument hire	Yes	<i>All tuition charges will be removed next session – costs for instrument hire will remain (Pupils entitled to Free School Meals will be exempt from hire costs).</i>	Full Concession for pupils entitled to Free School Meals	
<b>Highland Council</b>	Yes	£252	Yes	<i>Charges for pupils sitting SQA music will be removed next session</i>	Full Concession for pupils whose parents/carers receive Income Support; Income-based JSA; Child Tax Credit (income below £15,860); Child Tax Credit and Working Tax Credit (income below £6,420) or income-based Employment and Support Allowance. There may be other circumstances which arise - parents can request exemption.	14%

<b>Midlothian Council</b>	Yes	£150	Yes	<i>Charges for pupils sitting SQA music will be removed next session</i>	Full Concession for pupils registered for Free School Meals/ Clothing Grant. Families whose income is within £10k above the FME limit can apply for one of the 100 extra bursaries available.	25%
<b>Renfrewshire Council</b>	Yes	£150	Yes £50	<i>Concession rate of £50 for pupils sitting SQA music will be changed to total exemption from fees next session.</i>	Pupils eligible for concessions are currently charged £50 per year. These concessions are available for pupils entitled to Free School Meals or Clothing Grant, pupils sitting SQA music exams, and second or subsequent siblings. Concession rates for pupils entitled to FSM/Clothing Grants, and pupils sitting SQA music are changing to total exemption from charges next academic session.	Approx. 36%

Table 7: Charges and concessions, Local Authorities not charging SQA music pupils

Local Authority	Charge for Music Tuition? Yes/No	Tuition fee (per pupil, per year), 2012/13	Charge pupils sitting SQA music? Yes/No	Notes	Concessions	% pupils qualify for concessions <sup>9</sup>
<b>Aberdeenshire Council</b>	Yes	£284 (Individual), £192 (Group)	No		Full Concession for pupils registered for Free School Meals (FSM) <i>Sibling Discounts will be introduced next academic session.</i>	4.3% (FSM)
<b>Angus Council</b>	Yes	£183	No	<i>New rate for 2013/14 £191</i>	Full Concession for households with incomes below £15,860	25% (low income households) 7.2% (SQA)
<b>Argyll &amp; Bute Council</b>	Yes	£138	No	<i>All Pupils receive one free year</i>  <i>No Instruments Provided</i>	Full concession for pupils entitled to free school meals. Second or subsequent siblings, or pupils with more than one instrument receive £15 discount per year. Pupils learning the bagpipes receive 50% discount (Argyll Piping Trust Subsidy).	39% (includes listed concessions, 1 free year and SQA)
<b>Clackmannanshire Council</b>	Yes	£220	No		Half fee (£110) for families on Housing Benefit or Income Support.	3.70%
<b>Stirling Council</b>	Yes	£309 (Individual), £189 (Group)	No		Cost of £63 per year for pupils receiving free school meals or clothing grant	3%

<sup>9</sup> Please note some Local Authorities have included SQA concessions in these percentages, others have not

<b>Dundee City Council</b>	Yes	£132 + £83 (instrument)	No	<i>No additional fee for activities - Bands and Orchestras, add 1-2 hours of tuition per week (August to March)</i>	Full exemption (including exemption from hire costs) for pupils registered for free school meals or clothing grant.	Unknown approx. 400 pupils
<b>East Ayrshire Council</b>	Yes	£150 (Individual), £100 (Group)	No	<i>All Pupils have one free year</i>	Full concession for parents/carers on benefits. Half concession for second child receiving tuition, full concession for third or subsequent child receiving tuition.	83% (Includes listed concessions, 1 free year and SQA)
<b>East Dunbartonshire Council</b>	Yes	£140	No	<i>Introducing charges for second instrument at SQA.</i>	Full Concession for pupils registered for Free School Meals. Half concession for second or subsequent siblings	30.30% (Includes SQA)
<b>East Renfrewshire Council</b>	Yes	£160	No	<i>Lend instruments for two terms. SQA free for 1 instrument (S3-S6)</i>	Full Concession for pupils registered for Free School Meals. 25% discount for second or subsequent siblings.	8.6% (sibling discount) 6.4% (FSM)
<b>Falkirk Council</b>	Yes	£178.20 (Individual), £44.40 (Group). +£20.40 (Hire)	No	<i>Charging structure is changing next academic year to standard rate of £140 per pupil, per year (concession rate: £55 per pupil, per year)</i>	Individual lesson with concession £85.80 per year. Group lesson with concession £33.90. Hire with concession £11.10 per year. <i>Families in receipt of income support, family credit, invalidity/disability benefits or unemployment benefits qualify for concessions.</i>	
<b>Fife Council</b>	Yes	£125	No		Full Concession for pupils registered for Free School Meals.	14.7% (FSM) 15.8% (SQA)
<b>Inverclyde</b>	Yes	£95.50	No	<i>1 year free trial</i>	Full Concession for pupils with parents/carers on Income Support, Income-based JSA, Child	80% (includes listed

					Tax Credit (income less than £15,860), Asylum seeker support, Income-related Employment and Support Allowance or Working Tax Credit (income less than £6,420). Full concession for primary school pupils	concessions, 1 free year and SQA)
<b>Moray Council</b>	Yes	£300 (Individual) £201 (Group)	No		Full Concession for pupils registered for Free School Meals	6%
<b>North Ayrshire Council</b>	Yes	£120	No		Full Concession for pupils registered for Free School Meals. Half concession for second or subsequent siblings	16.9% FSM 4.1% Sibling Reduction
<b>North Lanarkshire Council</b>	Yes	£150	No	<i>1996: £80 per year 2006: removed charge 2010/11: reintroduced charge (£150)</i>	Full Concession for pupils registered for Free School Meals or Clothing Grant. Full Concession for pupils with <b>Additional Support needs</b> . Half concession for second or subsequent siblings, or second instrument.	61% (Includes SQA)
<b>Perth &amp; Kinross Council</b>	Yes	245.85	No		Full concession for pupils whose parents are on Income Support or JSA.	31% (includes SQA)
<b>Scottish Borders Council</b>	Yes	£125	No	<i>Tuition for SQA music pupils is free on one instrument but hire costs £58 per year (if not paying fees).</i>	Full concession for pupils eligible for Free School Meals. Full concession for third or subsequent siblings (£58 hire).	4.2%
<b>Shetland Islands Council</b>	Yes	£140	No	<i>First term free</i>	Full concession for pupils eligible for free school meals/clothing grant.	9% (FSM and Clothing grant) 14% (SQA)
<b>South Lanarkshire Council</b>	Yes	£180	No			66% (1 year free tuition under YMI and SQA)

**Table 8: Local Authorities not charging**

Local Authority	Charge for Music Tuition?	Best estimate % of educ. budget	% pupils take up Instrumental Tuition out of total Primary and Secondary School Roll	% pupils take up Instrumental Tuition 5 highest FSM entitlement schools <sup>10</sup>
<b>City of Edinburgh</b>	No	0.75%	10.9% <sup>11</sup>	5.8%
<b>East Lothian Council</b>	No	In Cultural Budget	9.6% <sup>12</sup>  (13.8% eligible school roll)	
<b>Glasgow City Council</b>	No	0.435%	7.2% <sup>13</sup>	15.5%
<b>Orkney Islands Council</b>	No	1%	18.2%	19%
<b>South Ayrshire Council</b>	No	0.6%	7.9%	6.5%
<b>West Dunbartonshire Council</b>	No	0.6%	7.9%	3.7% school roll (10.4 P5 to P7)
<b>West Lothian Council</b>	No	1%	9.3% (14.13% eligible school roll)	10.14% (school roll) 20.66% (eligible school roll)
<b>Comhairle nan Eilean Siar</b>	No	0.5%	10%	

<sup>10</sup> Uptake percentages are calculated out of total school rolls , therefore, Figures for the 5 highest Free School Meal entitlement schools could be misleading because primary schools may have a much lower percentage, tuition often does not begin until at least P4.

<sup>11</sup> Calculated from 2011/12 pupil numbers

<sup>12</sup> Calculated from 2011/12 pupil numbers

<sup>13</sup> Calculated from 2011/12 pupil numbers

Table 9: Revenue and Costs, Local Authorities charging SQA first

Local Authority	Charge	Revenue Made from Music Tuition, per year	% of Total Cost	Estimated Cost of Administering Charges	Revenue made from SQA Charges	best estimate % of Education Budget for Instrumental Music Tuition
<b>Aberdeen City Council</b>	Yes	£456,800	36%	£30,000	£100,776	0.56%
<b>Dumfries &amp; Galloway Council</b>	Yes	£160,000	21%	£39,000		
<b>Highland Council</b>	Yes	£647,000	35%	C£20,000		C. 0.8%
<b>Midlothian Council</b>	Yes	Approx. £120,000 (anything over £110k is reinvested into instruments etc.)	approx. 21%	C£12,000	Approx. £30,000	0.77% with £110k deducted (0.93% before deduction)
<b>Renfrewshire Council</b>	Yes	£87,285	approx. 17%	£15,000	£16,500	0.3%
<b>Aberdeenshire Council</b>	Yes	C£314,000	C20%	C£20,000		0.50%
<b>Angus Council</b>	Yes	£155,904	19.7%			0.65%
<b>Argyll &amp; Bute Council</b>	Yes	£89,992	12.20%	£10,000		0.60%
<b>Clackmannanshire Council</b>	Yes	average £35,000	13.50%			0.70%
<b>Stirling Council</b>	Yes	£86,000	16.50%	£8,000		0.50%
<b>Dundee City Council</b>	Yes	£111,360 (2012/13)	12%	£4,000		0.6%
<b>East Ayrshire Council</b>	Yes	£22,000	4%	absorbed by council		0.40%
<b>East Dunbartonshire Council</b>	Yes	£97,780	49.70%	£16,615		0.60%
<b>East Renfrewshire Council</b>	Yes	£220,720	21%	£38,500		0.70%
<b>Falkirk Council</b>	Yes	£45,000	6.4%	£20,000		
<b>Fife Council</b>	Yes	£197,119 (2011/12)	11.40%	£10,064		0.46%
<b>Inverclyde</b>	Yes	£15,089 (20% debt incurred)				0.85%

<b>Moray Council</b>	Yes	£133,000	39%	£4,000	0.40%
<b>North Ayrshire Council</b>	Yes	£94,790	16.8%	£12,000	0.4%
<b>North Lanarkshire Council</b>	Yes	£181,000	14.10%		0.36%
<b>Perth &amp; Kinross Council</b>	Yes	£251,951	29%	£18,000	0.39%
<b>Scottish Borders Council</b>	Yes	£49,157	12.8%	Approx. £9,400	0.41%
<b>Shetland Islands Council</b>	Yes	£68,864.96	11%	£10,000	0.17%
<b>South Lanarkshire Council</b>	Yes	£150,000	17.20%		0.30%

Table 10: Changes in charging and Pupil uptake, Local Authorities charging SQA first

Local Authority	Tuition fee (per pupil, per year), 2012/13	Started Charging	Changes between 2007 and 2012	Increased Charge Next year? Cost?	% pupils take up Instrumental Tuition out of total Primary and Secondary School Roll	% Pupils take up Instrumental Music Tuition in 5 highest Free School Meal entitlement schools <sup>14</sup>
<b>Aberdeen City Council</b>	£340 (Individual) £272 (Group)	Prior to 1996	Increased charges by £2 per lesson	No increase	8.2% (16% out of PoE <sup>15</sup> )	5.50%
<b>Dumfries &amp; Galloway Council</b>	£130 + £47.15 hire	2011/12		Removing tuition charges	6.2%	
<b>Highland Council</b>	£252	Always Charged	Increased charges by 25%	No increase	9.6%	2% (not robust - not all instruments available - staffing limitations, geography etc.)
<b>Midlothian Council</b>	£150	2011/12		£160	9.5%	20.10%
<b>Renfrewshire Council</b>	£150	Between 1997 & 2006	Increased charges from £75 to £150. Increased concession rate from full exemption to £50.	don't know	4.5%	6.80%

<sup>14</sup> These percentages are out of total school rolls , therefore, Figures for the 5 highest Free School Meal entitlement schools could be misleading because primary schools will have a much lower percentage, tuition often does not begin until at least P4.

<sup>15</sup> PoE = Population of Entitlement

<b>Aberdeenshire Council</b>	£284 (Individual) £192 (Group)	Prior to 1996	Charges increased by RPIX annually since 2007 (e.g. 2.5% in 2011 and 2012). Concessions decreased - sibling discounts were discontinued in 2011.	By RPIX for February 2013	6.4%	
<b>Angus Council</b>	£183	Always Charged	Charges increased by 5% per annum. Concessions from income level of £15,050 to £15,860.	5% increase to £191	9.5% (13% of pupils P4-S6)	C. 5%
<b>Argyll &amp; Bute Council</b>	£138	Between 1997 & 2006	Increased charges by £3 p.a. 2007, £3 p.a. 2008 and £5 p.a. 2010	£142	11.1% (calculated from 2011/12 figures)	10% approx.
<b>Clackmannanshire Council</b>	£220	Always Charged	From £206 to £220 (Concessions from £103 to £110)	1% increase: £222, £111 Concession	6.6% (calculated from 2011/12 figures)	1%
<b>Stirling Council</b>	£309 (Individual) £189 (Group)	Prior to 1996	Charges increased by average 2% each year	No increase	6.5%	2%
<b>Dundee City Council</b>	£132 + £83 instrument	Prior to 1996	Charges increased from £108 +£66 hire in 2007/8	Don't know	12.8%	26%
<b>East Ayrshire Council</b>	£150 (Individual) £100 (Group)	2010/11		Group sessions: £150	7.2%	7%
<b>East Dunbartonshire Council</b>	£140	Between 1997 & 2006	Increased charges by £60 since they were introduced	£150	8.2%	9%

<b>East Renfrewshire Council</b>	£160	Between 1997 & 2006	Charges increased by £60 since 2007. Sibling discount has reduced from 50% discount to 25%.	£180 2013/14, £200 2014/15	8.4%  (11.1% including additional 450 pupils in Music Centres)	10.30%
<b>Falkirk Council</b>	£178.20 (Individual) £44.40 (Group) £20.40 (Instrument)	Prior to 1996	Increased charges by 3% per year up to 2012	Standard rate: £140 per pupil, per year	5.6%  (7.5% out of P4 to S6 pupils)	
<b>Fife Council</b>	£125	Between 1997 & 2006	Increased charges by £30. S3 pupils taking Music no longer qualify for SQA exemption - not until S4.	No increase	7.5%	4.12%
<b>Inverclyde Council</b>	£95.50	Between 1997 & 2006	Increased charges by 2.5%	£98.36	11.9%	7.6%
<b>Moray Council</b>	£300 (Individual) £201 (Group)	Between 1997 & 2006	Increase in charges by 15%	Currently under review	7%	
<b>North Ayrshire Council</b>	£120	2010/11		£140	8.5%	0.2%
<b>North Lanarkshire Council</b>	£150	Introduced charges in 1996 (£80 per year), removed these charges in 2006, re-introduced charges in 2010/11 (£150)		No increase	8.1%	7.70%
<b>Perth &amp; Kinross Council</b>	£245.85	Always Charged	Increased charges by £33.85	Inflation rate only	9.6% (calculated from 2011/12 figures)	7%
<b>Scottish Borders Council</b>	£125	Between 1997 & 2006	Increased in charges	2013/14: First year of tuition,	6.2%	13.7%

				reduced fee of £70		
<b>Shetland Islands Council</b>	£140	2010/11		No increase	20.04%	15%
<b>South Lanarkshire Council</b>	£180	2011/12		No increase	6.9% <sup>16</sup> 12% of P6-S6 pupils	1.90%

---

<sup>16</sup> 12% within actual instrumental tuition commencement parameters of P6-S6. Pre P6 pupils receive instrumental music tuition in South Lanarkshire through YMI projects

Table 11: Number of pupils over past 5 years

Local Authority	Number of pupils					
	2007/8	2008/9	2009/10	2010/11	2011/12	2012/13
Aberdeen City Council	1737	1912	1969	1924	1809	1738
Aberdeenshire Council		2644	2589	2711	2471	2175 <sup>17</sup>
Angus Council	1100-1200	1100-1200	1100-1200	1144 (June)	1142 (June)	1454 (March)
Argyll & Bute Council	1385	1344	1352	1226	1256	
City of Edinburgh Council		4712	4652	4798	4758	
Clackmannanshire Council	434	509	419	396	439	<sup>18</sup>
Stirling Council		C 810	C 810	C 810	C 810	810
Dumfries & Galloway Council		1896	2132	1799	2071	1210
Dundee City Council		Approximately 1800				2200
East Ayrshire Council	1121	1103	1142	1126	1113	1147
East Dunbartonshire Council					1185	1301
East Lothian Council	1269	1237	1257	1263	1267	
East Renfrewshire Council		1727	1858	1921	1856	1802 <sup>19</sup>
Falkirk Council		1113	1211	1148	1141	1142
Fife Council		5128	4043	3243	3888	3564
Glasgow City Council		4080	4098	4540	4538	
Highland Council		2800	2850	2920	2950	3000
Inverclyde Council	655	725	903	1087	1190	1222

<sup>17</sup> Aberdeenshire's figures include pupils who may have dropped out over the course of the year.

<sup>18</sup> At the start of 2012/13 pupil numbers were largely as they were in 2011/12, Clackmannanshire Council

<sup>19</sup> East Renfrewshire's pupil numbers include approximately 450 pupils attending Wednesday and Saturday Music classes

<b>Midlothian Council</b>		1500	1300 <sup>20</sup>	1140 <sup>21</sup>	1100 <sup>22</sup>
<b>Moray Council</b>	825 - 850	825 - 850	825 - 850	825 - 850	850
<b>North Ayrshire Council</b>	1611	1629	1478	1749	1445
<b>North Lanarkshire Council</b>		3940	3966	3012 <sup>23</sup>	3421
<b>Orkney Islands Council</b>	480-520	480-520	480-520	480-520	498
<b>Perth &amp; Kinross Council</b>	1500	1570	1522	1558	1661
<b>Renfrewshire Council</b>		1780	1547	1208	1129
<b>Scottish Borders Council</b>		2032	1889	1140 <sup>24</sup>	981
<b>Shetland Islands Council</b>			751	678	662
<b>South Ayrshire Council</b>	Approx 1000	Approx 1000	Approx 1000	Approx 1000	1100
<b>South Lanarkshire Council</b>				3663	2487 <sup>25</sup>
<b>West Dunbartonshire Council</b>	1036	822 (+ approx 150-200 <sup>26</sup> )	1140	1024	1105
<b>West Lothian Council</b>	2089	2128	2273	2182	2265
<b>Comhairle nan Eilean Siar</b>					360 <sup>28</sup>
<b>Estimated total number of Instrumental Music Pupils across Scotland: 55,067<sup>29</sup> (8.3% of total Primary &amp; Secondary School Roll)</b>					

<sup>20</sup> First year after redundancies, Midlothian

<sup>21</sup> First year after introducing charges, Midlothian

<sup>22</sup> Expecting an increase next session when SQA charges are removed, Midlothian

<sup>23</sup> Re-introduced Charges, North Lanarkshire

<sup>24</sup> 2007, 2008 and 2009 figures contain YMI figures, Scottish Borders Council

<sup>25</sup> First year introducing charges, South Lanarkshire

<sup>26</sup> Missing guitar figures from 3 high schools - 2008-9, West Dunbartonshire

<sup>27</sup> Staffing reduction from 10.5 to 9 FTE

<sup>28</sup> 849 pupils receive music tuition if including YMI and Gaelic funded tuition.

<sup>29</sup> 55,058 based on 2012/13 pupils numbers where available, 2011/12 numbers where 2012/13 pupil numbers were not available

Table 12: Number of teachers over past 5 years

Local Authority	Number of Teachers											
	2007/8		2008/9		2009/10		2010/11		2011/12		2012/13	
	Teachers	FTE	Teachers	FTE	Teachers	FTE	Teachers	FTE	Teachers	FTE	Teachers	FTE
Aberdeen City Council	42	35	43	35	42	35	37	32.4	35	32.4	33	29.4
Aberdeenshire Council	45	39	45	39	45	39	45	39	44	38	47	37
Angus Council			26	18.8	26	18.8	25	18.8	24	18.8	24	18.8
Argyll & Bute Council			22	16.4	22	16.4	22	16.4	22	16.4	22	16.4
City of Edinburgh Council				C. 59		C. 59	72	54.2	71	54.2	80	54.2
Clackmannanshire Council	9	5.8	9	5.8	9	5.8	8	4.8	8	4.8	8	4.8
Stirling Council			16	12.8	16	12.8	16	12.8	16	12.8	16	12.8
Dumfries & Galloway Council												
Dundee City Council	Teacher numbers have fallen by 2 FTE over this period ( from 22.2 FTE)										26	20.2
East Ayrshire Council	19	14.4	19	13.7	19	13.7	19	13.7	19	13.7	19	13.7
East Dunbartonshire Council	remained constant; there has been a slight reduction in FTE (from 16.2 to 15.7)										28	15.7
East Lothian Council	22		22		23		23		24			
East Renfrewshire Council	24	13.2	24	13.2	24	13.2	24	13.2	24	13.2	24	13.2
Falkirk Council	24		24		24		24		24		24	17.3
Fife Council			56	41.1	57	41.1	57	36.6	48	36.6	50	36.86
Glasgow City Council		52		52		52		52		53.8		
Highland Council	41	35.1	42	36.1	42	36.1	43	37.1	43	37.1	44	38.5

<b>Inverclyde Council</b>	20		20		20		21		23		23	
<b>Midlothian Council</b>												
<b>Moray Council</b>			12	9.8	12	9.8	12	9.8	12	9.8	12	9.8
<b>North Ayrshire Council</b>	30	16.9	30	16.8	30	16.8	27	16.8	28	16.3	27	15.5
<b>North Lanarkshire Council</b>	54	32.1	51	30.2	49	29.3	57	33	56	32.9	56	32.9
<b>Orkney Islands Council</b>	9	5.87	9	5.87	9	5.87	9	5.87	9	5.87	9	5.87
<b>Perth &amp; Kinross Council</b>	Teacher numbers have remained constant for last 5 years: 22 members of staff, 17.9 FTE											
<b>Renfrewshire Council</b>			50+ part time sessional	16.3	50+ part time sessional	16.3	9 part time sessional	13.9	9 part time sessional	11.9		
<b>Scottish Borders Council</b>	16	11.64	14	11	14	11	14	11	12	10.7	12	9.8
<b>Shetland Islands Council</b>							20	13 full time, 7 part time	19	8 full time, 11 part time	17	8 full time, 9 part time
<b>South Ayrshire Council</b>	22		22		22		21		21		21	
<b>South Lanarkshire Council</b>	46	32.7	46	32.7	46	32.7	44	30.5	44	30.5	44	30.5
<b>West Dunbartonshire Council</b>	15	10.65	15	10.5	15	10.5	15	10.5	15	10.5	14	9
<b>West Lothian Council</b>	28	23.97	28	24.53	28	23.97	27	23.47	26	23.03	26	23.03
<b>Comhairle nan Eilean Siar</b>			3	3	3	3	3	3	3	3	3	3

Table 13: Number of teachers by discipline

Local Authority	Strings	Woodwind	Brass	Percussion	Drum Kit	Guitar	Traditional Instruments	Voice	Piano/ Keyboard	Other
<b>Aberdeen City Council</b>	6	7	7	3	-	2	1	3	4	
<b>Aberdeenshire Council</b>	18	7	6	4	(percussion)	4	0	0	8	
<b>Angus Council</b>	10	3	5	1	0	1	1	0	2	
<b>Argyll &amp; Bute Council</b>	2	7	4	1	0	0	9	0	0	
<b>City of Edinburgh Council</b>	17.1	9.94	10.06	5.78	(percussion)	5.76	0.46	2.32	2.78	
<b>Clackmannanshire Council</b>	2	1	1	0	1	1	1	1	0	
<b>Stirling Council</b>	3	1.8	2	0.8	0.2	1	1.4	1	1.6	
<b>Dumfries &amp; Galloway Council</b>	5	6	4	3	(percussion)	5	0	0	0	
<b>Dundee City Council</b>	8	4	5	3	3	1.5	1 (Piping)	0	4	
<b>East Ayrshire Council</b>	1.1	2.2	5.4	0	0.9	0.4	1	1.7	0.5	
<b>East Dunbartonshire Council</b>	11	6	6	3	(percussion)	3	1	0	0	
<b>East Lothian Council</b>	6	4	4	2	(percussion)	2	1 <sup>30</sup>	0	5	
<b>East Renfrewshire Council</b>	17	11	8	4	1	7	5	0	0	
<b>Falkirk Council</b>	7	3	4	0	1	2	1	2	4	
<b>Fife Council</b>	19, 15.5	8, 6.4 FTE	6, 4.5	3, 2.6 FTE	(percussion)	4, 2.3	2, 1.4 FTE	(piano/	7, 4.16 FTE	

<sup>30</sup> String teachers also teach fiddle

	FTE		FTE			FTE		keyboard)		
<b>Glasgow City Council</b>	10.9	9.2	6.7	8.4	0	9.5	1	2.9	4.4	Tabla 1 Clarsach 0.6
<b>Highland Council</b>	17	6	5	1	(percussion)	1	14			
<b>Inverclyde Council</b>	5, 3 FTE	4, 2.6 FTE	4, 3.4	3, 1.8 FTE	(percussion)	3, 1.6	1, 0.6 FTE	3, 1.6 FTE		
<b>Midlothian Council</b>	4.1 FTE	3 FTE	3 FTE	1.3 FTE		2 FTE	0.2 FTE	0.5 FTE	0.4 FTE	
<b>Moray Council</b>	6	3	2		1					
<b>North Ayrshire Council</b>	6	5	6	2		3	1	3	3	
<b>North Lanarkshire Council</b>	7	15	14	4	4	6	3		2	
<b>Orkney Islands Council</b>	6	2	1							
<b>Perth &amp; Kinross Council</b>	11	3	3	2	0	0	1	0	3	
<b>Renfrewshire Council</b>	3.2 FTE	3 FTE	2.2 FTE	1.5 FTE	0 FTE	1.6 FTE	0 FTE		0 FTE	
<b>Scottish Borders Council</b>	2	2	3	1		1.8	0	0	0	
<b>Shetland Islands Council</b>	1	3	1	1	(percussion)	YMI	6	1	1	
<b>South Ayrshire Council</b>	6	2	6	1	(percussion)	1	1	1	2	
<b>South Lanarkshire Council</b>	5	13	8	6	(percussion)	6	0	2	0	
<b>West Dunbartonshire Council</b>	4	4	3	0	1	2	0	0	0	
<b>West Lothian Council</b>	4	6	10	2	0	3	1	0	0	
<b>Comhairle nan Eilean Siar</b>		0.5	0.5				3	1		

Table 14: Number of Instrumental Music teachers, FTE, Part time and Class Size

Local Authority	Number of Instrumental Music Teachers	FTE	Part time	Range of Class Size	Pupil per 1 FTE teacher
<b>Aberdeen City Council</b>	33	29.4	5	1 to 5	59
<b>Aberdeenshire Council</b>	47	37	24	5 or 6 (unless paying individual)	59
<b>Angus Council</b>	23	17.92	13	1 to 4	83
<b>Argyll &amp; Bute Council</b>	22	16.4	12	1 to 4	77
<b>City of Edinburgh Council</b>	80	54.2	48	1 to 14	88
<b>Clackmannanshire Council</b>	8	4.8	6	1 to 6	91
<b>Stirling Council</b>	16	12.8	9	1 to 6	63
<b>Dumfries &amp; Galloway Council</b>	25	17.68	11	1 to 4	68
<b>Dundee City Council</b>	26	20.2	6	1 to 10	109
<b>East Ayrshire Council</b>	19	13.7	11	1 to 4	84
<b>East Dunbartonshire Council</b>	28	15.7	22	4 to 6	83
<b>East Lothian Council</b>	24	16.28	16	1 to 7	78
<b>East Renfrewshire Council</b>	23 FTE teachers, 5 part-time teachers at the Wednesday Music Centre and 30 part-time teachers at the Saturday Music Centre	13.2	35 part time teachers at both the Wednesday and Saturday Music centres (additional to 13.2 FTE Monday to Friday staff)	1 to 4	102 <sup>31</sup>
<b>Falkirk Council</b>	24	17.3	12	1 to 5	66
<b>Fife Council</b>	50	36.86	30	1 to 5	97

<sup>31</sup> Based on 1352 pupils in Monday to Friday IM classes (not including pupils attending Wednesday and Saturday music centres)

<b>Glasgow City Council</b>	71	53.8	28	2 to 8	84
<b>Highland Council</b>	44	38.5	18	1 to 5	78
<b>Inverclyde Council</b>	89 posts (some staff have up to 4 posts)	15.8	15	1 to 30	77
<b>Midlothian Council</b>	19	14.1	9	1 to 5	78
<b>Moray Council</b>	12	9.8	4	1 to 4	87
<b>North Ayrshire Council</b>	24	15.6	15	1 to 5	101
<b>North Lanarkshire Council</b>	55	32.9	32	1 to 5	117
<b>Orkney Islands Council</b>	9	5.87	6	1 to 4	85
<b>Perth &amp; Kinross Council</b>	22	17.9	13	1 to 10	93
<b>Renfrewshire Council</b>		11.5	20 part time sessional	1 to 9	91
<b>Scottish Borders Council</b>	12	9.8	5	1 to 4	93
<b>Shetland Islands Council</b>	17	6	11	1	110
<b>South Ayrshire Council</b>	21	13	11	1 to 6	94
<b>South Lanarkshire Council</b>	44	30.5		max 4 pupils	97
<b>West Dunbartonshire Council</b>	14	9	11	1 to 4	107
<b>West Lothian Council</b>	26	23.03	7	1 to 6	103
<b>Comhairle nan Eilean Siar</b>	3	3	0	1 to 15 (varies)	120
<b>Total</b>		<b>633.54 FTE</b>			<b>Average: 87</b>

Table 15 - Selection Processes and Drop-out rates

Local Authority	Selection process includes test? Yes/No Details	Proportion of interested pupils accepted	Drop-out rates
<b>Angus Council</b>	<b>Yes</b> All pupils are tested, mainly using Kodaly games. See further details: <a href="http://www.angus.gov.uk/musicservices/testing.htm">http://www.angus.gov.uk/musicservices/testing.htm</a>	Approximately 63% of pupils who are tested are selected.	
<b>City of Edinburgh Council</b>	<b>Yes</b> There is no uniform selection process, some instructors proceed with traditional tests, others work in partnerships with schools to select pupils who could benefit from tuition. Several instructors try not to test in the traditional sense.	This differs between schools, instruments and instructors. Within some schools all pupils are able to access the service, in others a proportion will be selected.	Drop-out rates vary. Largest drop-out rates occur at the start of the year.  As soon as a space becomes available another pupil receives tuition.
<b>Clackmannanshire Council</b>	<b>No</b> All applications are put on a waiting list - there is no testing or selection process	All fee paying students are accepted when teaching time is available	Approximately 7% per year
<b>East Ayrshire Council</b>	<b>Yes</b> Some instructors carry out formal tests while others have put in place a longer selection process. They will work with all interested pupils over a longer period of time working on their general music making skills to see how pupils improve over time. Home work is also set to see if they can complete tasks at home – this also tests if pupils will be motivated to practice. Some of the smaller schools in East Ayrshire do not test if only a few pupils are interested.	Approximately 50% of interested pupils in East Ayrshire are able to take up lessons. They receive approximately 800 applications and take on about 430 pupils.	Pupils drop in and out throughout the year, as soon as a space becomes available it is usually filled.  Largest drop out levels occur after the free first year tuition.
<b>East Lothian Council</b>	<b>Yes</b> Usually all pupils in the year group are given a blanket aural assessment and then interested pupils followed		

up with further selection procedures.			
<b>East Renfrewshire</b>	<p><b>Yes</b></p> <p>Information evenings for parents, application/information forms are issued to interested pupils. Pupils are then assessed for suitability for their chosen instrument (alternatives are offered if possible). Instructors also consult Primary Music Team who have comprehensive music profiles of every pupil as part of their YMI music programme. Feedback for unsuitable pupils is available if requested by parents.</p>	<p>Out of 596 pupils applying for tuition in 2012/13, 426 were taken on.</p> <p>Unsuccessful pupils are encouraged to try another instrument at a later date or join one of the three authority choirs if interested.</p> <p>Any instrument not taught in a particular school can be studied at the Saturday Music Centre.</p>	<p>2012/13 8.9% pupils dropped out, 2011/12 7.2% and 2010/11 9.4%</p>
<b>Fife Council</b>	<p><b>Yes</b></p> <p>At the start of session, all the P5 or P6 pupils in a class (depending on the instrument offered) are involved in assessments for instrumental instruction. This involves a demonstration of the instrument(s) taught and assessment of the whole class through a series of music games, played on a CD. The results of this assessment, along with practical tests for the instrument concerned and consultation with class/head teacher, help inform the decision as to who is offered tuition. A similar process is carried out in S1 coordinated by music teacher</p>	<p>Almost all pupils take part in initial workshop games</p>	
<b>Highland Council</b>	<p><b>Yes</b></p> <p>Subject to parental permission, instructors spend a couple of informal sessions assessing pupil's physical and musical suitability for the instruments available (only where there are more pupils interested than spaces available). Following the instructors decision, a formal application form is issued to parents and the pupil will be added to the instructor's timetable.</p>	<p>At this stage, any pupil who can't be offered lessons will be added to a waiting list (maintained by each instructor).</p>	

<b>Glasgow City Council</b>	<b>Yes</b> Aural and practical tests. Sometimes trials are held for suitability depending on supply and demand	
<b>Inverclyde Council</b>	<b>Yes</b> Pupils attend a performance workshop, interested pupils proceed with listening test, embouchure test and, where applicable, mouth piece and coordination test. Selected pupils have a 3 month trial period.	Approximately 40% have dropped out each year over the past 3 years
<b>Midlothian Council</b>	<b>No</b> Midlothian try to match instruments to pupils through tests, but all pupils have access to the service. Negotiations may be necessary, and waiting lists sometimes occur, for instance if one instrument is very popular. The service try to provide for all pupils and their requirements	Lower drop-out level since introducing charges (yearly contracts).  Currently very low drop-out (possibly 1-3%)
<b>Moray Council</b>	<b>Yes</b> There is a selection process because demand far outstrips supply. When spaces become available letters are sent home to parents asking permission for their child to be tested. The selection process consists of singing, clapping and identifying the number of notes in a cord (basic Grade 1 ABRSM aural test).	Exact figures are not available but year on year for violin approximately 4 to 6 pupils apply for every 1 violin space and 2 to 3 for every woodwind, brass and percussion space, for example in September 2012 at Bishopmill Primary, Elgin there were 25 pupils applying for 4 available spaces in violin lessons.  Approximately 25% of pupils drop out of music tuition year on year, however, there is a higher annual drop-out in woodwind, brass and percussion as pupils start later (P5- S1) violin starts in P3-5.
<b>North Ayrshire Council</b>	<b>No</b> Open Access For the past three years we have had an open access policy allowing every pupil who would like to play the opportunity where available.	11% in 2010/11, 16% in 2011/12, 11% in 2012/13 Dropout rate is fairly consistent and monitored throughout the year

<b>Renfrewshire Council</b>	<b>Yes</b> Listening test and guided aptitude test on every instrument available within that school.	The largest drop-out level occurs after the free first year of tuition – this has always been the case (before increasing charges).
<b>Scottish Borders Council</b>		Vary widely year on year. In 2010/11 there was a 26% drop out, 2011/12 38% and 2012/13 16.5%.
<b>Shetland Islands Council</b>	<b>No</b> Applications sent home when lessons become available, pupils will either receive tuition or go on the waiting list for when lessons become available	9% dropped out in 2010/11, 30% in 2011/12 and 31% in 2012/13
<b>South Ayrshire Council</b>	<b>Yes</b> Standard ear and pitch tests, the highest scoring pupils are given a 6 week trial before a final decision is made by the pupil, parent and teacher as to whether lessons should continue or not. Most pupils continue after the 6 week trial. In secondary school instructors work closely with music teachers to identify potential students.	
<b>South Lanarkshire Council</b>	<b>No</b> Assessment does take place for tuition but the service always tries to accommodate for any pupil who would like to take part. No pupil is directly turned away.	Largest drop out levels occur in P6 after YMI free year, and in S5 with pupils choosing not to take Higher Music.
<b>West Dunbartonshire</b>	<b>Yes</b> Blanket listening quiz with whole class - only those requesting tuition will be marked. Instrument audition with interested pupils. Following these auditions the	The instructor recruits to their maximum and the remaining pupils are placed on a waiting list. In some cases reserves get access to the programme if 2012/13 – 35 pupils withdrew from tuition (2 of these pupils moved from West

	<p>instructor consults with the class and head teachers taking into account both ability on instrument and quiz results. It is not necessarily the pupils with the highest quiz scores who join the programme. In many cases the pupils physical ability to handle and play the instrument are more important.</p>	<p>others drop-out.</p> <p>221 pupils requested audition, 125 accepted with 96 reserves. (taking into account a 1.5 FTE reduction from August 2012, and a restructure to accommodate this while continuing to see all pupils on last years timetable)</p>	Dunbartonshire council)
<b>West Lothian Council</b>	<p><b>Yes</b></p> <p>All pupils in the selected recruitment year attend a show and tell workshop. Any pupils who wish to be considered for lessons undergo a short musical aptitude test and are shown the instruments available with the chance to try them out. Pupils are then selected with numbers dependent on time and instrument availability.</p>		
<b>Comhairle nan Eilean Siar</b>	<p><b>No</b></p> <p>There is no selection process and the service tries to provide for all interested pupils.</p>	No pupils turned away	

Table 16 - Total Cost of Instrumental Music Service, 24 Local Authorities charging for instrumental instruction

Local Authority	Revenue from Charges	% of Total Cost	Estimated total cost
Aberdeen City Council	£456,800	36%	£1,268,889
Aberdeenshire Council	£314,001	20%	£1,570,000
Angus Council	£155,904	19.7%	£792,747
Argyll & Bute Council	£89,992	12%	£737,639
Clackmannanshire Council	£35,000	14%	£259,259
Stirling Council	£86,000	17%	£521,212
Dumfries & Galloway Council	£160,000	21%	£761,905
Dundee City Council	£111,360	12%	£928,000
East Ayrshire Council	£22,000	4%	£550,000
East Dunbartonshire Council	£97,780	50%	£196,740
East Renfrewshire Council	£220,720	21%	£1,051,048
Falkirk Council	£45,000	6.4%	£700,500
Fife Council	£197,119	11%	£1,729,114
Highland Council	£647,000	35%	£1,848,571
Inverclyde Council	£15,089 (20% debt incurred)		£697,189.25
Midlothian Council	£120,000	21%	£571,429
Moray Council	£133,000	28%	£470,000
North Ayrshire Council	£94,790	17%	£564,226
North Lanarkshire Council	£181,000	14%	£1,283,688
Perth & Kinross Council	£251,951	29%	£868,797
Renfrewshire Council	£87,285	17%	£513,441
Scottish Borders Council	£66,126	14.1%	£468,564
Shetland Islands Council	£68,865	11%	£626,045
South Lanarkshire Council	£150,000	17%	£872,093
<b>Total (24 Local Authorities)</b>	<b>£3,806,782</b>		<b>£19,851,096</b>

*Please note these values are estimates. Revenue from charges is approximately 19% of the total cost*

Table 17 - Total Cost of Instrumental Music Service, 8 Non-charging Local Authorities

Local Authority	Total Cost per year	Details	Additional Notes
<b>City of Edinburgh Council</b>	£2,382,538	Instructor staff salaries: £2,276,776, IMS Manager Salary: £55,000, Staff travel: £12,000, Arts and Learning: £38,762	The £38,762 for Arts and Learning is mainly taken up by IMS concerts, ensembles, travel, essential instrument repairs and additional staff costs. Being the capital city we are often asked to provide young musicians for local and national events of importance (e.g. Sir Chris Hoy - Freedom of the City, Dali Lama, National CfE Conference, Olympics etc.) This is un-budgeted and carries additional costs for extra rehearsals and transport. We have no budget for instruments and repairs (this actually curtails the number of pupils we can take onto timetables particularly in deprived areas). Last Year the budget was c.£2,432,538 - we had to reduce from 2 IMS managers to 1 making a saving of C.50,000
<b>East Lothian Council</b>			
<b>Glasgow City Council</b>	£2,045,651		
<b>Orkney Islands Council</b>	£230,000		
<b>South Ayrshire Council</b>	£618,375		
<b>West Dunbartonshire Council</b>	£516,273	Instrumental Instructors (exc. ESO manager): £421,044, ESO Management cost: £51,232, Instrumental Repairer & Repair Budget: £34,240 (Repair budget alone: £2430), Schools Orchestra Budget: £9757	All salary figures include costs and an allowance for travelling expenses for staff between establishments
<b>West Lothian Council</b>	£1,278,928	Instrumental Music: £226,170 Instrumental Music Tuition: £1,052,758	
<b>Comhairle nan Eilean Siar</b>	Approx. £500,000		
<i>Total</i>	<b>£7,571,765 (excluding East Lothian)</b>		