



Population  
**200**



Households  
**85**



Settlement Hierarchy  
Smaller Towns &  
Villages

### Development Strategy / Placemaking Objectives

- Restrict growth due to flood risk.
- Protect the scientific and environmental value of adjoining areas.
- Retain rural and historical character of the village.
- Kingston has a linear street pattern, with strong building line directly onto the road edge. Mix of single and 1.5 storey houses with wet dash or stone with slate roof, with simple forms and traditional proportions.
- Development proposals in the Special Landscape Area must reflect the traditional settlement character in terms of siting and design and respect the special qualities of the designation.

**Developers are referred to page 1 for additional notes on Placemaking, Infrastructure, Transportation, Developer Obligations, Key Design Principles and Landscaping definitions.**

**HOUSING**

Due to the area’s susceptibility to flooding no greenfield or redevelopment sites are identified.

Any proposals for new housing (including infill and subdivision) must satisfy the Development Plan policies on Flood Risk and Natural Heritage (in relation to demonstrating that there will not be adverse effects on the integrity of the Moray and Nairn Coast Special Protection Area (SPA), River Spey Special Area of Conservation (SAC) and Lower Spey – Spey Bay SAC for example through changes to water quality or disturbance of species).

**ENVIRONMENT/GREEN INFRASTRUCTURE**

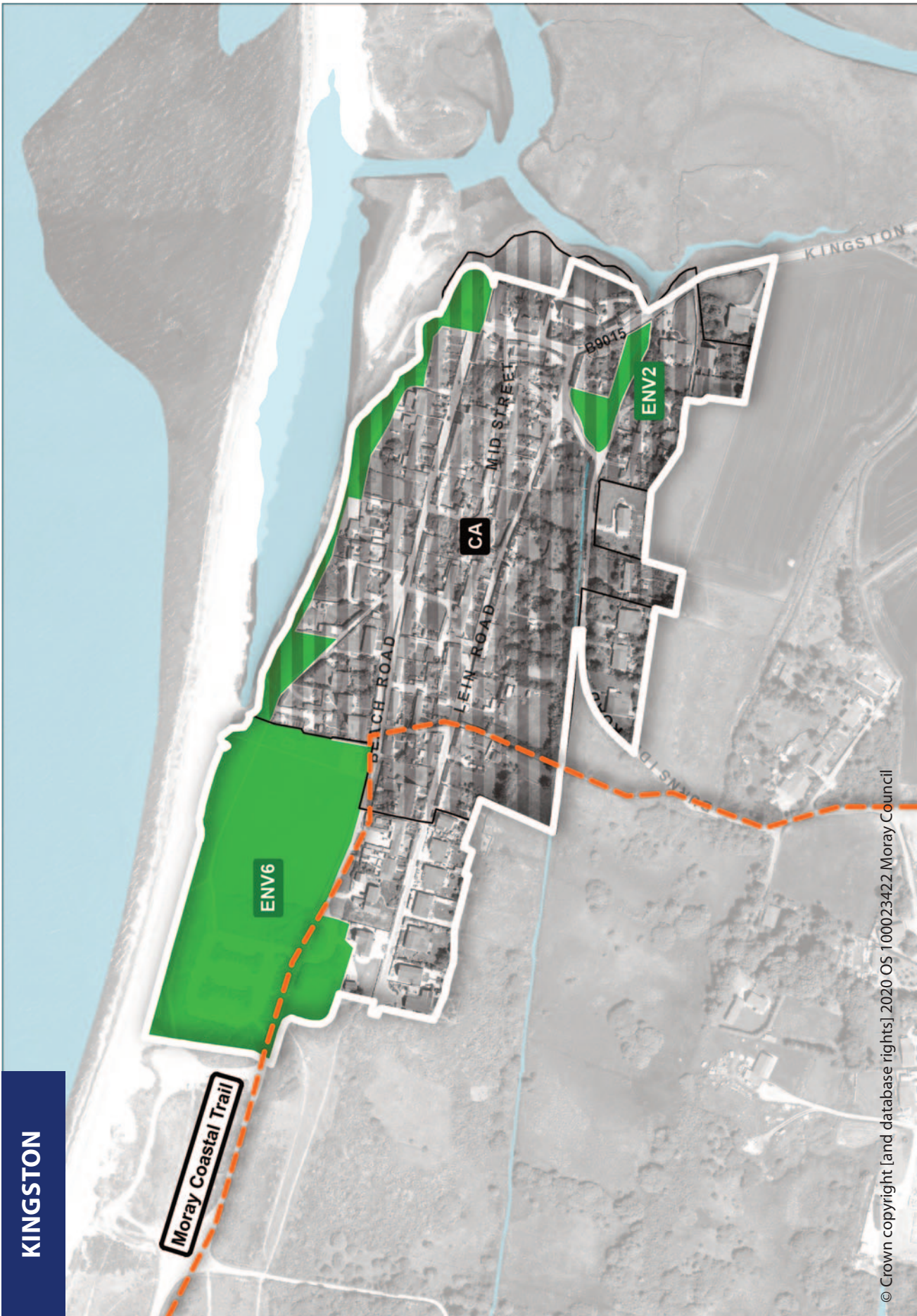
Open space that contributes to the environmental amenity of Kingston will be safeguarded from development that is not related to their current use as set out in the table below:

REF	Type of Open Space	Location
ENV2	Amenity Greenspace	Burnside Road
ENV6	Natural/Semi-Natural Greenspace	Kingston Foreshore and Car Parking

**WIDER ENVIRONMENTAL DESIGNATIONS**

REF	Type of Environment Designation	Specification
CA	Conservation Area	Kingston Conservation Area
RAMSAR	Ramsar	Moray and Nairn Coast
SLA	Special Landscape Area	Lossiemouth to Portgordon Coast; Lower Spey; and Gordon Castle Policies
SPA	Special Protection Area	Moray and Nairn Coast
SAC	Special Area of Conservation	Lower River Spey-Spey Bay; and River Spey.
SSSI	Site of Special Scientific Interest	River Spey; and Spey Bay





© Crown copyright [and database rights] 2020 OS 100023422 Moray Council

KINGSTON



