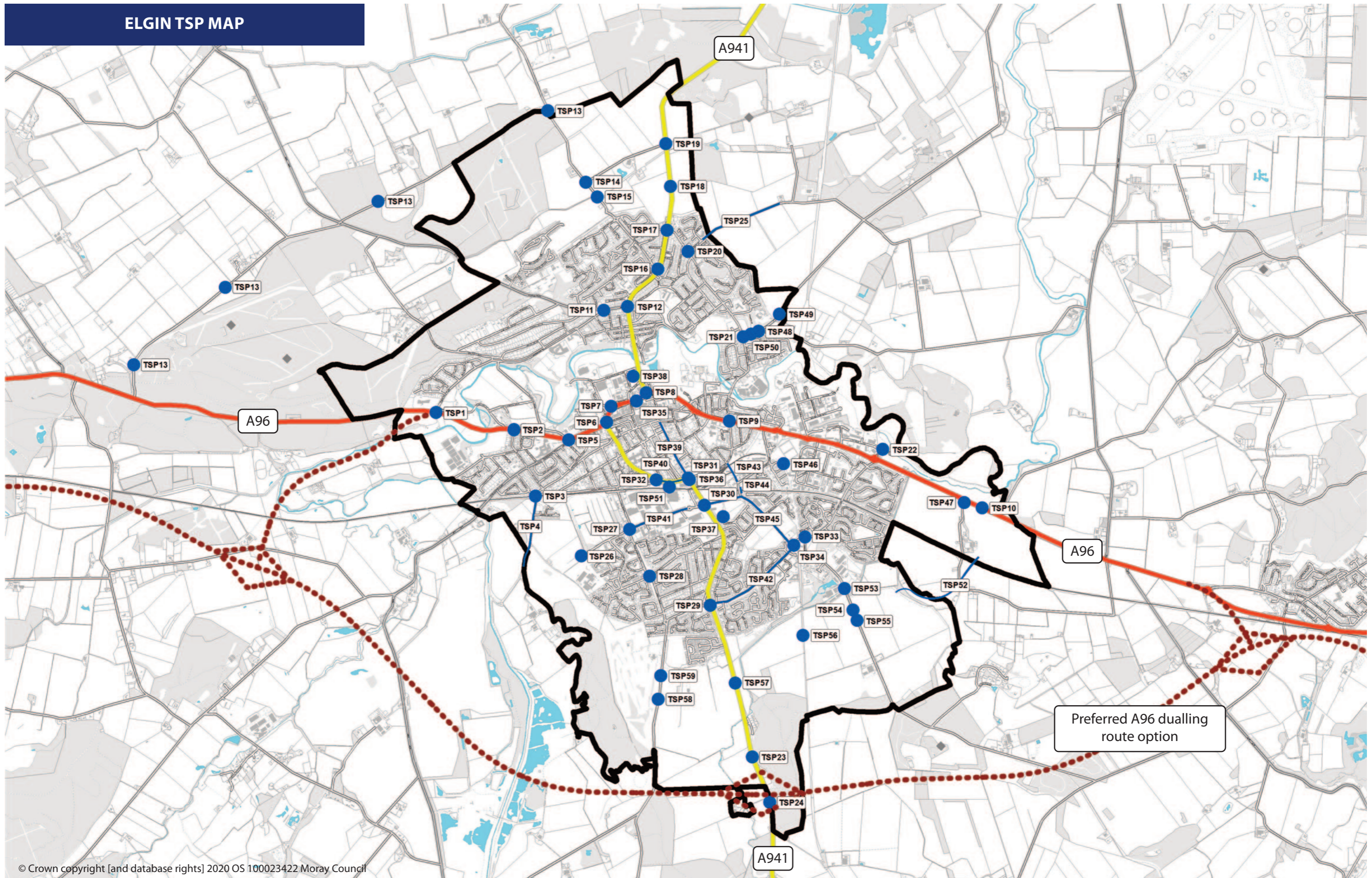


ELGIN TSP MAP

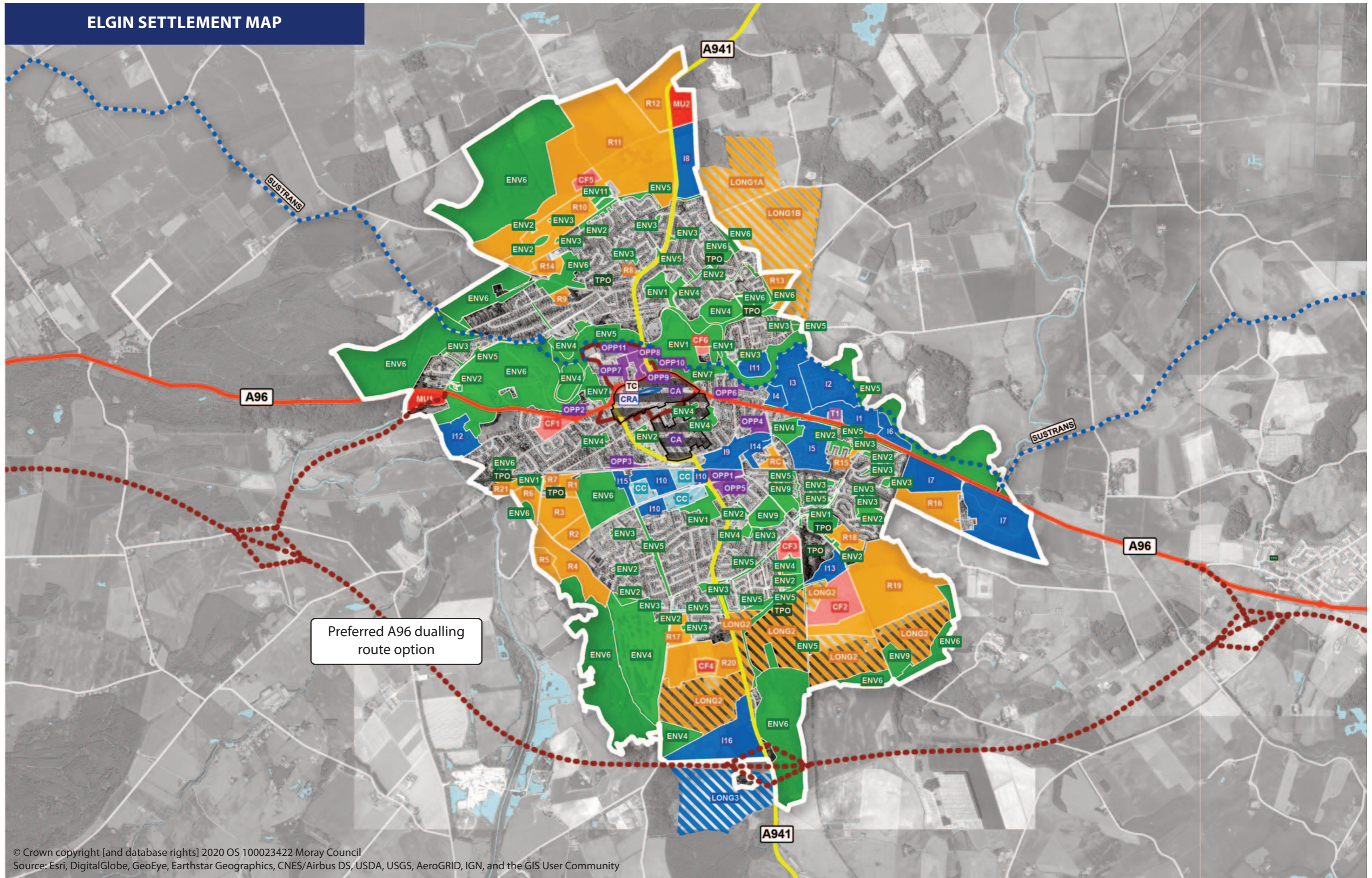


© Crown copyright [and database rights] 2020 OS 100023422 Moray Council

TSP1	A96/Morrison Road junction improvement including MU1 Riverview access	TSP19	A941 Lossiemouth Road/Myreside Road closure of junction to vehicular traffic in association with Findrassie development	TSP34	Reiket Lane/Linkwood Road/Thornhill Road junction – impact on junction from development sites to the south of Elgin needs to be considered in Transport Assessments	TSP45	Linkwood Road cycle lanes (ETS Scheme – I4H) – impact on this route from development sites needs to be determined in Transport Assessments to inform level of developer obligation
TSP2	A96/Wittet Drive junction – impact on this junction from development sites needs to be considered in Transport Assessments	TSP20	Lesmurdie Road/Linksfield Road – junction improvements associated with development in north Elgin	TSP35	Elgin bus station safeguard, potential re-location (Part of Elgin City for the Future and ETS Scheme - M3B)	TSP46	Pinefield to East End Primary School active travel route (ETS Scheme – I4K)
TSP3	Bilbohall Road/Mayne Road/Fleurs Road/Wards Road improvements to railway bridge and junctions to serve Bilbohall development	TSP21	Lesmurdie Road/Calcotts Road – potential junction improvements associated with development in north Elgin	TSP36	Station Road and Maisondieu Road pedestrian crossing improvements (ETS Scheme – M1B) – impact on this route from development sites needs to be determined in Transport Assessments to inform level of developer obligation	TSP47	A96/Moss of Barmuckity junction closure to vehicular traffic once new A96 roundabout to access Barmuckity has been completed
TSP4	Bilbohall Road widening to serve Bilbohall development	TSP22	Linkwood Industrial Estate pedestrian and vehicular access to be provided between site I1 and I6	TSP37	Market Drive connection from site OPP5 to existing cul-de-sac	TSP48	Calcots Road/Pitgaveny Road junction improvements required to development to the east of Elgin
TSP5	A96/South Street/Pluscarden Road junction – impact on this junction from development needs to be considered in Transport Assessments	TSP23	A941 Rothes Road – new junction to serve Burnside of Birnie	TSP38	Elgin Lorry Park – potential re-location	TSP49	Pitgaveny Road widening and provision of footway/cycleway in association with development to the east of Elgin
TSP6	A96/A941 Hay Street/High Street junction – impact on this junction from development sites needs to be considered in Transport Assessments	TSP24	A941 Rothes Road – new junction to serve Burnside of Birnie	TSP39	Moss Street – convert to one-way, widen footways, provide cycle lanes (ETS Scheme – I2A) – impact on this route from development sites needs to be determined in Transport Assessments to inform level of developer obligation	TSP50	Calcotts Road/Pitgaveny Road footway/cycleway provision from development to existing infrastructure at Lesmurdie Road
TSP7	A96/Haugh Road/Tesco access junction – impact on this junction from development sites needs to be considered through Transport Assessments	TSP25	Linksfield/Caysbriggs Road – widening and upgrading with footway/cycleway provision to serve development at LONG1A and LONG1B	TSP40	Station Road cycle lanes (ETS Scheme – I4F) – impact on this route from development sites needs to be determined in Transport Assessments to inform level of developer obligation	TSP51	Railway Station
TSP8	A96/A941 Cumming Street junction – impact on this junction from development sites needs to be considered in Transport Assessments	TSP26	Edgar Road extension to form primary access to Bilbohall development	TSP41	Edgar Road pedestrian crossing improvements (ETS Scheme-M1A) – impact on this route from development sites needs to be determined in Transport Assessments to inform level of developer obligation	TSP52	New road link with footway/cycleway provision from Elgin South to Barmuckity
TSP9	A96/Pansport Road/Maisondieu Road junction – impact on this junction from development sites needs to be considered in Transport Assessments	TSP27	Edgar Road/The Wards/Glen Moray Drive – junction improvements associated with Bilbohall development and site LONG2	TSP42	Thornhill Road pedestrian crossing improvements (ETS Scheme – M1D) – impact on this route from development sites needs to be determined in Transport Assessments to inform level of developer obligation	TSP53	Linkwood Road replacement bridge over Linkwood Burn with footway/cycleway provision
TSP10	A96/Barmuckity – new footway/cycleway to connect development to Elgin	TSP28	Glen Moray Drive/Springfield Road/Sandy Road – potential junction improvements associated with development to the south of Elgin	TSP43	New road link – Ashgrove Road to Maisondieu Road (ETS Scheme – I1B) – impact on A941 New Elgin Rail Bridge from development sites needs to be determined in Transport Assessments to inform level of developer obligation	TSP54	Linkwood Road widening with footway/cycleway on both sides of the road from Reiket Lane to southern extent of Elgin South (LONG2)
TSP11	Morrison Road/Duffus Road junction improvements required to serve development	TSP29	A941 Main Street/Birnie Road/Thornhill Road junction – impact on junction from development sites to south of Elgin needs to be considered in Transport Assessments	TSP44	New cycle link over railway line at Ashgrove Road (ETS Scheme – I4B) – impact on A941 New Elgin Rail Bridge from development sites needs to be determined in Transport Assessments to inform level of developer obligation	TSP55	Linkwood Road – new accesses to serve Elgin South development
TSP12	A941 North Street/Morrison Road junction improvements required to serve development	TSP30	A941 New Elgin Road/Edgar Road/Linkwood Road junction (ETS Scheme – I3A) – impact on junction from development sites needs to be determined in Transport Assessments to inform level of developer obligation			TSP56	Core paths EG06 and EG60 – upgrade to provide surfaced and lit pedestrian and cycle access to Elgin South development
TSP13	Westerfolds/Covesea Road junction and road improvements required in association with Findrassie development	TSP31	A941 New Elgin Road/Station Road/Maisondieu Road junction (ETS Scheme – I3A) – impact on junction from development sites needs to be determined in Transport Assessments to inform level of developer obligation			TSP57	A941 Rothes Road – new junction to serve Elgin South development and provision of footway/cycleway to connect development to existing network and provision of bus laybys.
TSP14	Myreside Road/Covesea Road junction and road improvements required in association with Findrassie development	TSP32	A941 Hay Street/Wards Road junction – impact on this junction from development sites to the south of Elgin needs to be considered in Transport Assessments			TSP58	Birnie Road – new junctions to serve Elgin South development, including LONG2
TSP15	Covesea Road – new junction required in association with Findrassie development	TSP33	Reiket Lane/Linkwood Road junction improvements associated with development to south of Elgin			TSP59	Birnie Road widening to serve Elgin South development and provision of footway/cycleway to connect development to existing network
TSP16	A941 Lossiemouth Road/Covesea Road junction improvements required in association with Findrassie development					TSP60	A96 Route of Proposed Dualling
TSP17	A941 Lossiemouth Road/Lesmurdie Road junction improvements required in association with Findrassie development						
TSP18	A941 Lossiemouth Road – new junctions to provide access for Findrassie development						

Note: Additional TSP's may be identified as a result of Traffic Modelling to be undertaken this includes scenarios with and without A96(T) dualling scheme.

ELGIN SETTLEMENT MAP



Preferred A96 dualling route option

© Crown copyright [and database rights] 2020 OS 100023422 Moray Council
Source: Esri, DigitalGlobe, GeoEye, Earthstar Geographics, CNES/Airbus DS, USDA, USGS, AeroGRID, IGN, and the GIS User Community

ELGIN GREEN NETWORK MAP

Promote recreational access to the countryside

Central green spine east to west as focus of Findrassie development with green connections to north to woodland and the countryside

East-West green corridor connecting to River Lossie Corridor








Create woodland edge and landscaped framework for industrial development at Barmuckity

Create character, provide a high quality landscape setting and well connected greenspaces at Bilbohall

Create effective landscape framework to provide a setting for industrial uses at Burnside of Birnie and to positively manage pipeline corridor and areas at risk from flooding for biodiversity, recreation and access

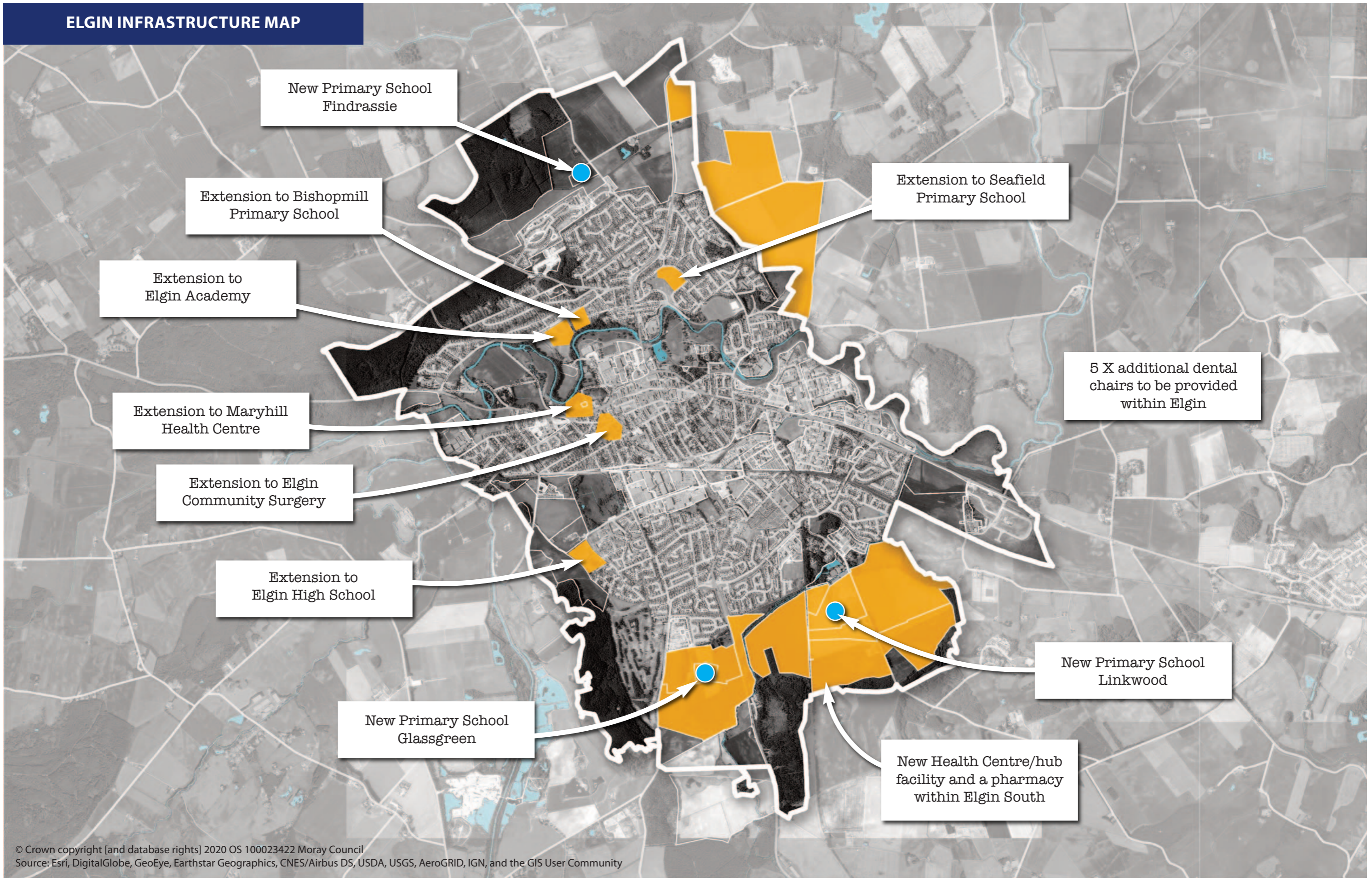
Create character and high quality connected greenspace including a linear park connecting through the site to a central park within Elgin South Masterplan Area

KEY

-  Create High Quality Attractive Gateways
-  Existing Greenspace
-  Proposed Green Network
-  Connecting People to the Wider Countryside
-  Open Space
-  Feature Avenue Planting
-  Neighbourhood Parks

© Crown copyright [and database rights] 2020 OS 100023422 Moray Council

ELGIN INFRASTRUCTURE MAP



© Crown copyright [and database rights] 2020 OS 100023422 Moray Council
Source: Esri, DigitalGlobe, GeoEye, Earthstar Geographics, CNES/Airbus DS, USDA, USGS, AeroGRID, IGN, and the GIS User Community

BILBOHALL MASTERPLAN



FINDRASSIE MASTERPLAN



MASTERPLAN DRAWING

ELGIN SOUTH MASTERPLAN

