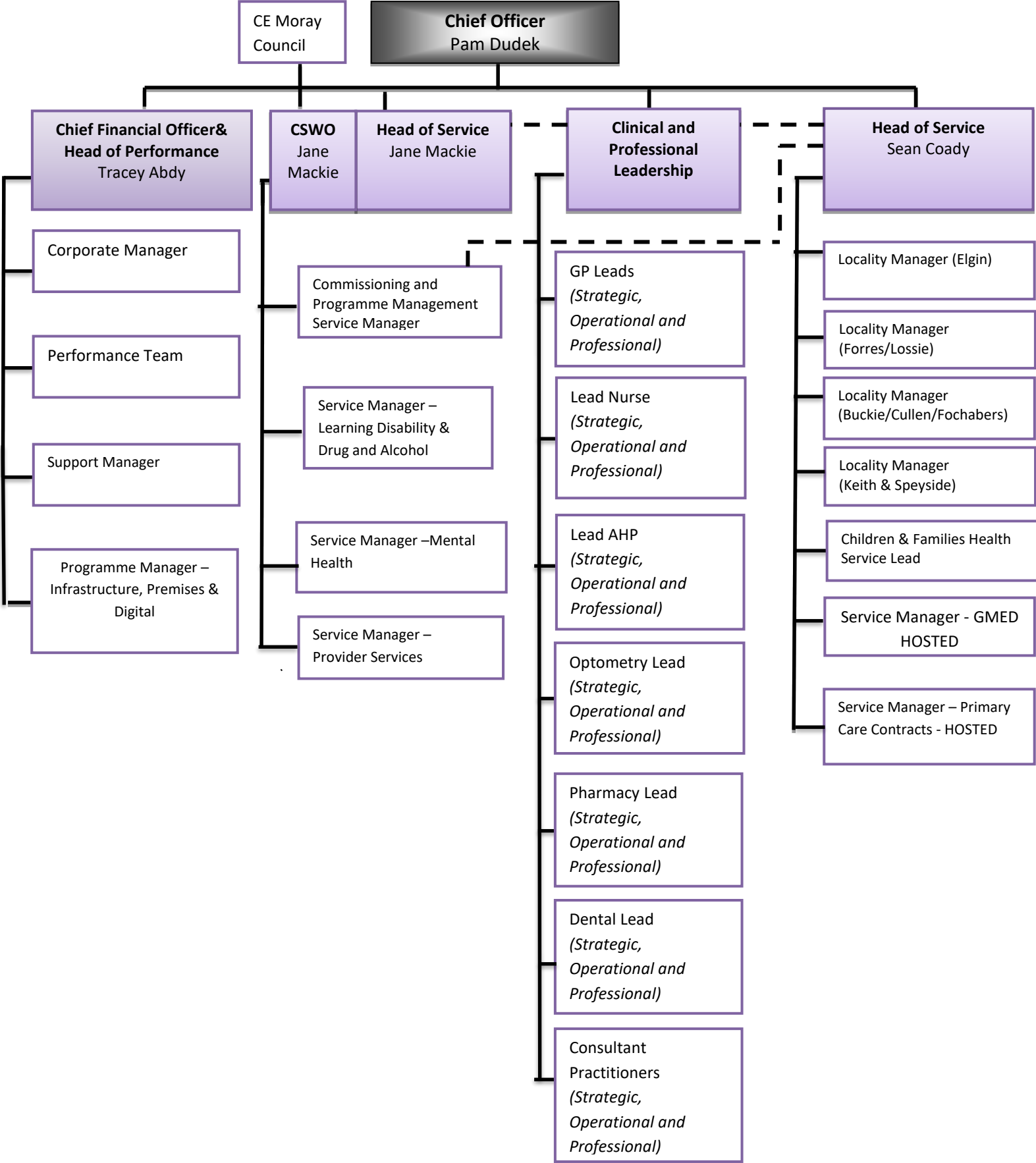
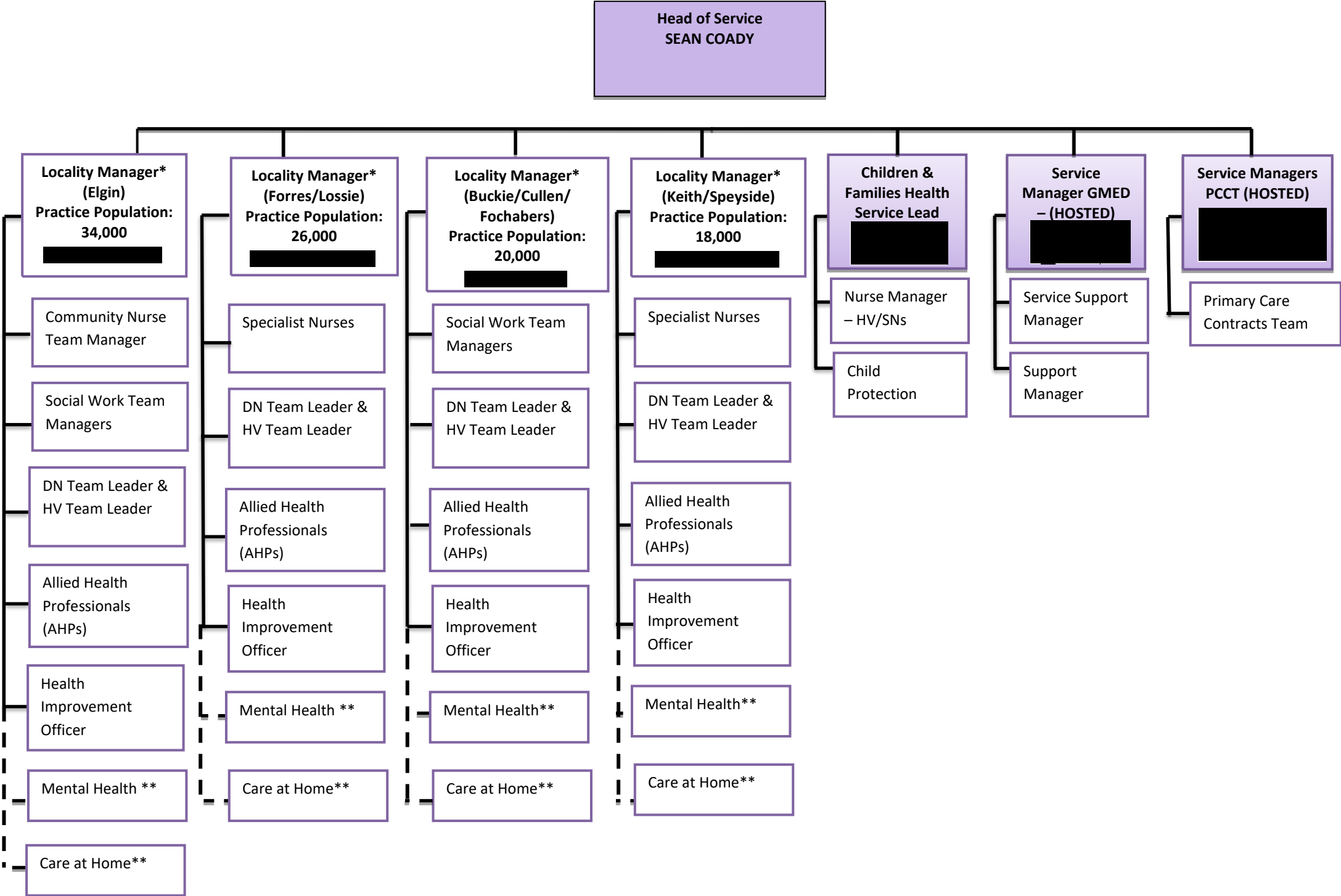


HSCM MGMT OVERVIEW



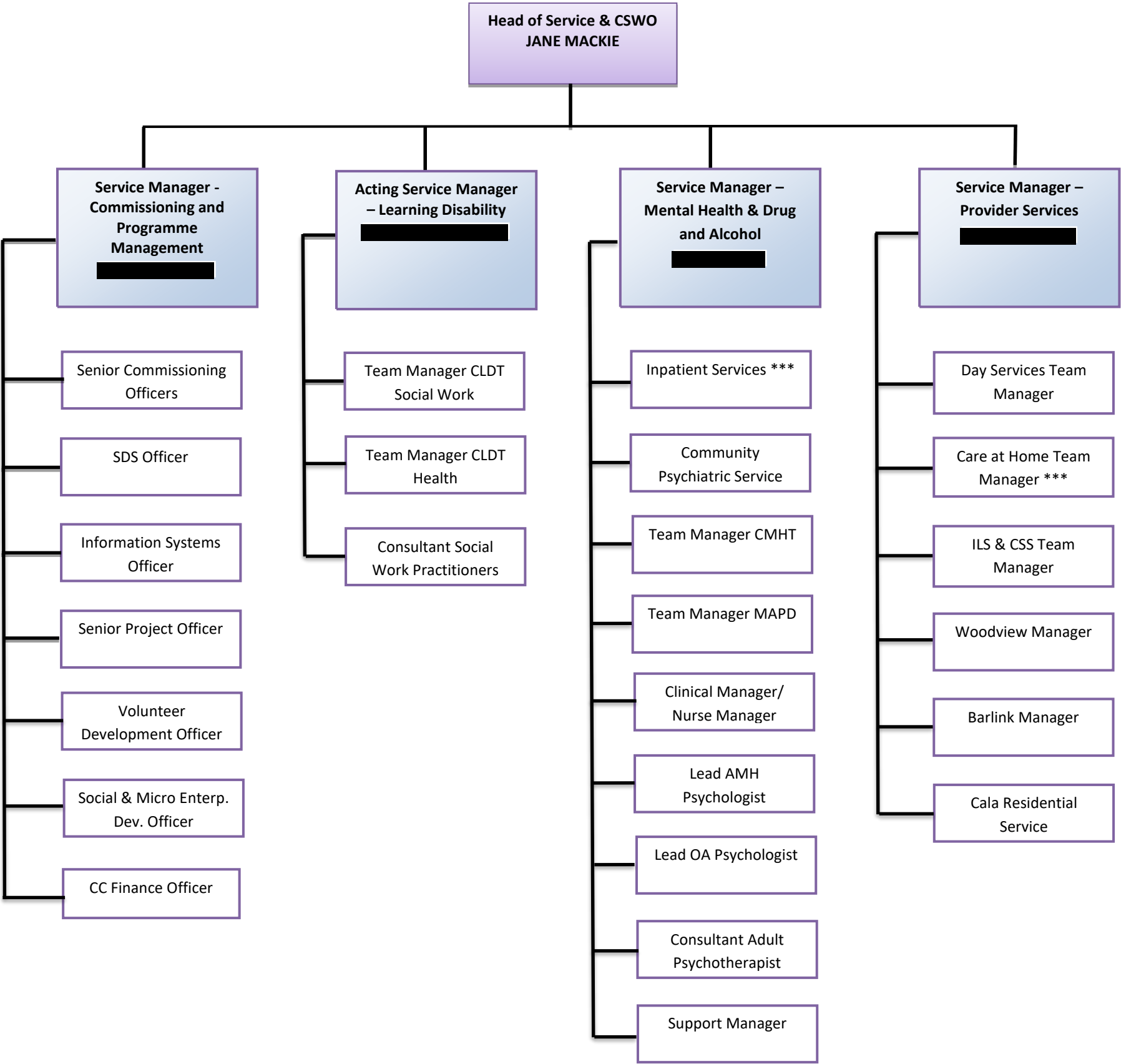
Head of Service/Hosted Services



* The Locality Managers will also hold individual portfolios: Primary Care, Health Improvement, Access and Community Hospitals/Palliative Care and head up the neighbourhood delivery teams

** Part of Integrated Team at local level.

Head of Service/CSWO



*** Working in integrated locality teams.