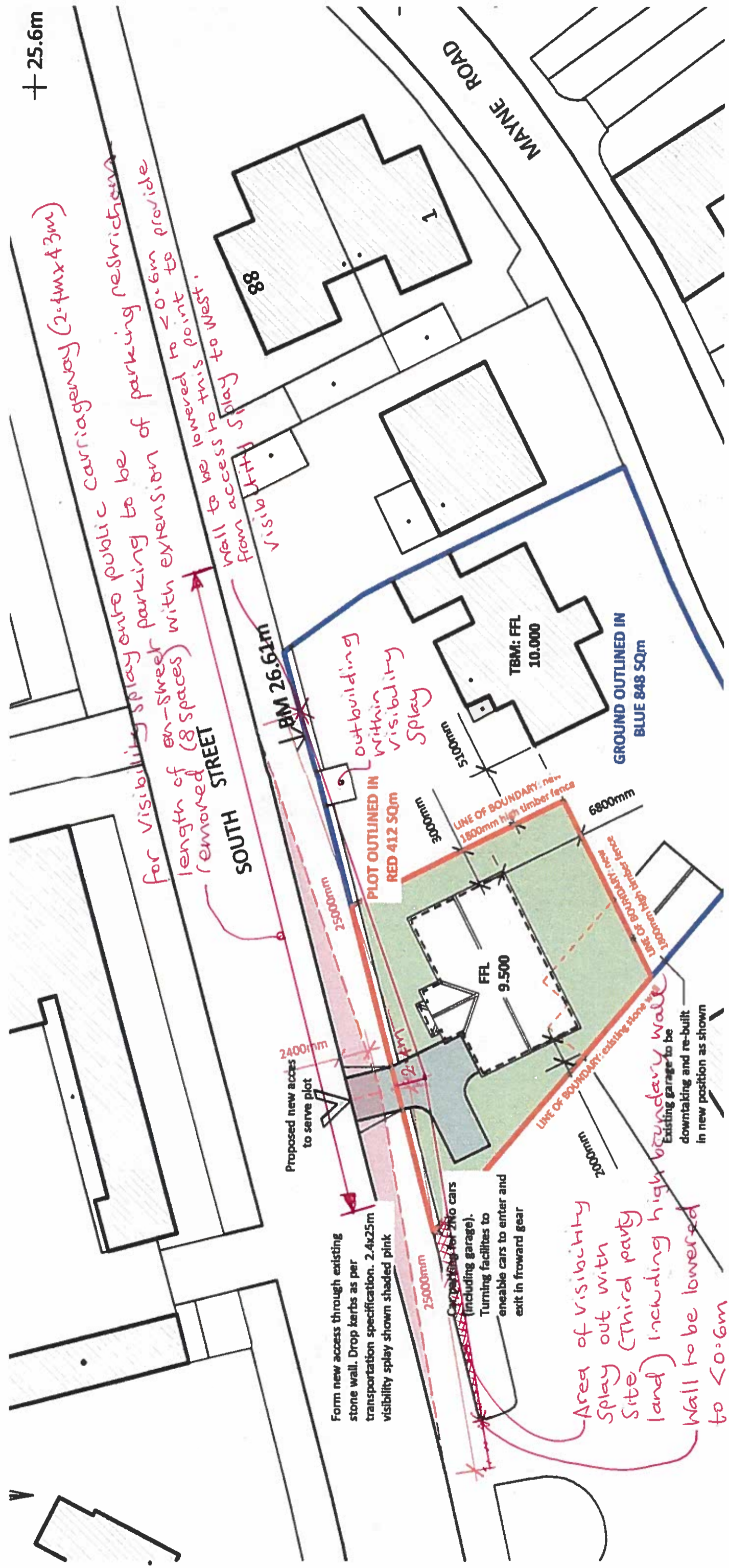


TMC 01 Annotated Extract from General Arrangement Drawing no. 17/ASH/PP01



+ 25.6m

(2.4m x 4.3m)

for visibility splay onto public carriageway with extension of parking restrictions length of on-sweep parking to be removed (8 spaces) with extension of parking to provide visibility splay to West.

SOUTH STREET

RM 26.61m

Proposed new access to serve plot

Form new access through existing stone wall. Drop kerbs as per transportation specification. 2.4x2.5m visibility splay shown shaded pink

Car parking for 2 No cars (including garage). Turning facilities to enable cars to enter and exit in forward gear

out-building within visibility splay

PLOT OUTLINED IN RED 412 SQm

FFL 9.500

TBM: FFL 10.000

GROUND OUTLINED IN BLUE 848 SQm

LINE OF BOUNDARY: new 1800mm high timber fence

LINE OF BOUNDARY: existing stone wall
Existing garage to be down-taken and re-built in new position as shown

Area of visibility splay out with site (third party land) including high boundary wall
Wall to be lowered to $\le 0.6m$ from access to this point to provide visibility splay to the east.

Existing garage to be down-taken and re-built in new position as shown