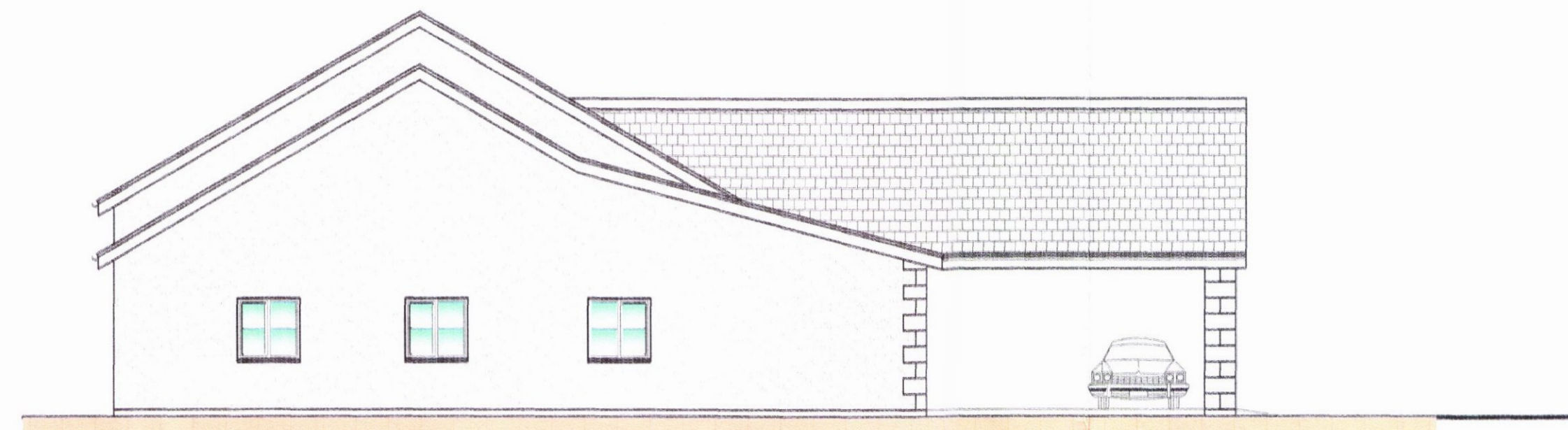
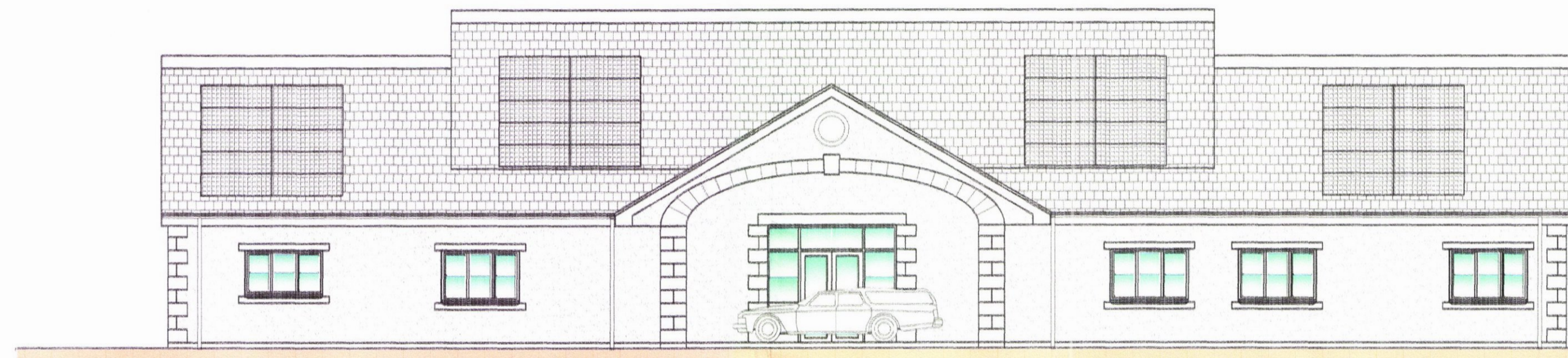


REAR ELEVATION - NORTH EAST

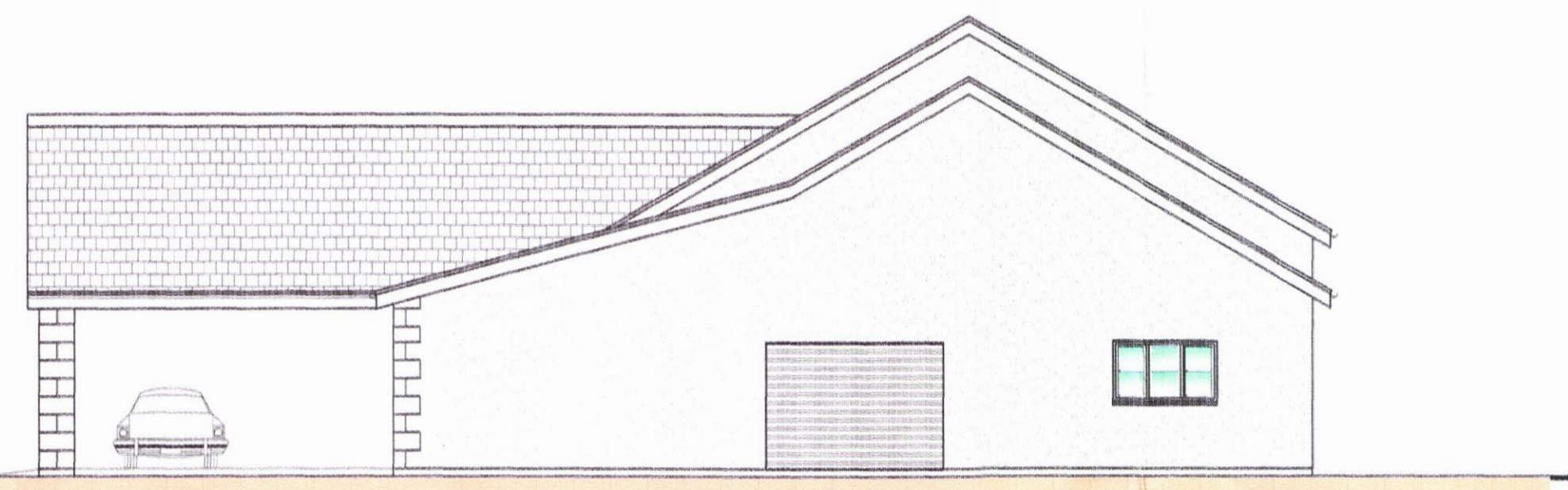


END ELEVATION - NORTH WEST

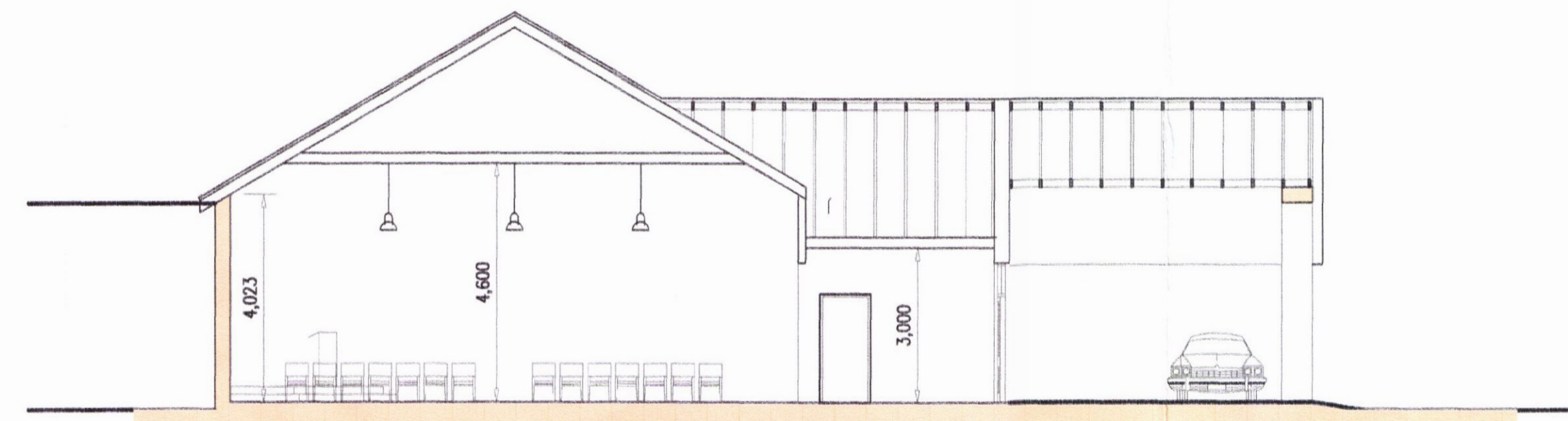
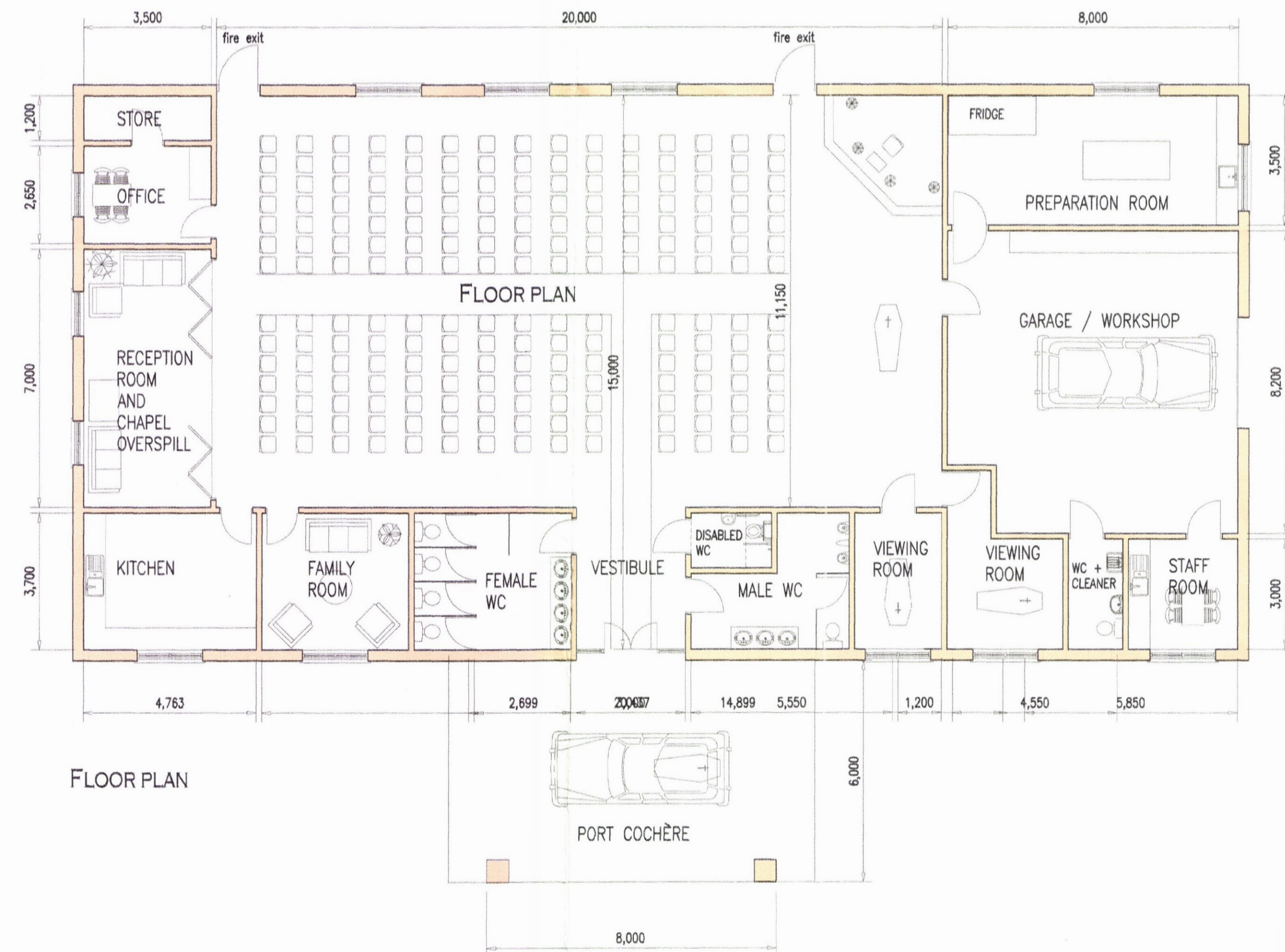


FRONT ELEVATION - SOUTH WEST

Grey concrete tiled roof with solar panels to south west elevation



END ELEVATION - SOUTH EAST



TYPICAL CROSS SECTION

REVISIONS
 COPYRIGHT
 THIS DRAWING IS COPYRIGHT KEITH REMNANT OF ICTHUS ARCHITECTS AND IS NOT TO BE REPRODUCED IN WHOLE OR PART WITHOUT HIS EXPRESS AND WRITTEN CONSENT

ICTHUS ARCHITECTS
 KEITH R REMNANT DIP ARCH RIBA ARIAS
PLANNING DRAWING

PROJECT
 PROPOSED FUNERAL CHAPEL
 AND BURIAL GROUND AT
 BURGHEAD
 FOR
 D. RALPH AND SONS
 DRAWING
 PLANS SCHEME 03

SCALES 1:100	PROJ. NO. 1416
	DRG. NO. 10
CAD REF 1416 10	DATE SEPT 12 15
REVISION NOS	

HARBOURSIDE STUDIO
 68 GRANARY STREET,
 BURGHEAD, ELGIN IV30 5UA
 TEL: 01343 830 958